

Product datasheet for **AP06032PU-M**

Bim (BCL2L11) Rabbit Polyclonal Antibody

Product data:

Product Type:	Primary Antibodies
Applications:	ELISA, IHC, WB
Recommended Dilution:	Western blot: 1/500-1/1000. Immunohistochemistry on Paraffin sections: 1/50-1/200.
Reactivity:	Human, Mouse, Rat
Host:	Rabbit
Clonality:	Polyclonal
Immunogen:	Synthetic peptide, corresponding to amino acids 1-50 of Human Bim.
Specificity:	This antibody detects endogenous levels of Bcl-2-like 11 / BIM- α/β protein (region surrounding Ala2).
Formulation:	Phosphate buffered saline (PBS), pH 7.2 State: Aff - Purified State: Liquid purified Ig fraction Preservative: 0.05% Sodium azide
Concentration:	1.0 mg/ml
Purification:	Affinity chromatography using epitope-specific immunogen (> 95% pure by SDS-PAGE).
Conjugation:	Unconjugated
Storage:	Store undiluted at 2-8°C for one month or (in aliquots) at -20°C for longer. Avoid repeated freezing and thawing.
Stability:	Shelf life: one year from despatch.
Predicted Protein Size:	~25 kDa
Gene Name:	BCL2 like 11
Database Link:	Entrez Gene 10018 Human O43521

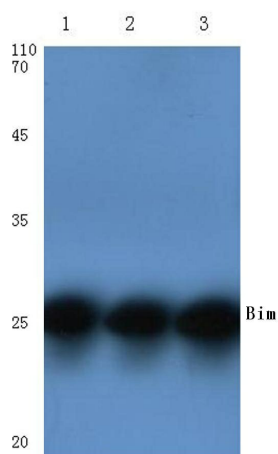
[View online »](#)

Background:

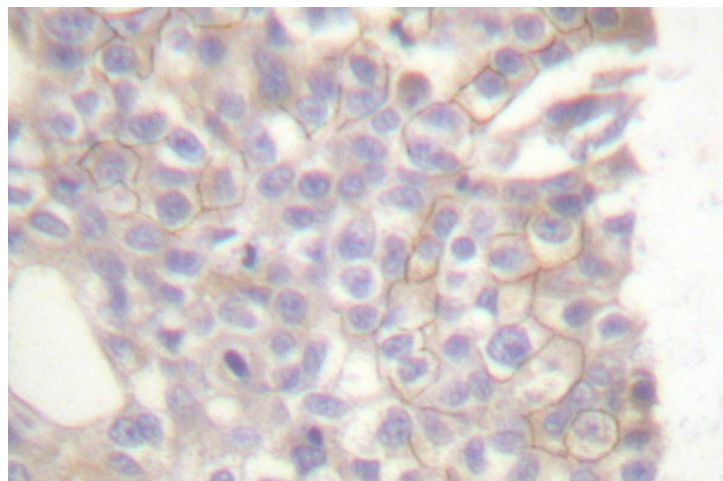
Pro-apoptotic Bcl-2 family members promote cell death by neutralizing their anti-apoptotic relatives, which otherwise maintain cell viability by regulating caspase activity. Bim belongs to the BH3-only subgroup of Bcl-2 related proteins and exists in three distinct isoforms, BimS (short), BimL (long) and BimEL (extra long). ERK1/2 phosphorylates BimEL, resulting in rapid degradation of the isoform via the proteasome pathway. At least three sites for ERK1/2 phosphorylation exist on BimEL, whereas ERK1/2 does not effect BimS or BimL, implying a unique role for BimEL in cell survival signaling.

Synonyms:

Bcl2-L-11, BCL2L11, BIM, BimEL, BimL, BimS

Product images:


Western blot (WB) analysis of Bim antibody at 1/500 dilution Lane 1:Hela cell lysate Lane 2:Mouse kidney tissue lysate Lane 3:Rat kidney tissue lysate



Immunohistochemical analysis in paraffin-embedded human breast carcinoma tissue using Bcl-2-like 11 antibody.