

## Product datasheet for **AP06030PU-M**

### BCR Rabbit Polyclonal Antibody

#### Product data:

Product Type:	Primary Antibodies
Applications:	ELISA, WB
Recommended Dilution:	<b>Western blot:</b> 1/500-1/1000. <b>Immunohistochemistry on paraffin sections:</b> 1/50-1/200.
Reactivity:	Human, Mouse
Host:	Rabbit
Clonality:	Polyclonal
Immunogen:	Synthetic peptide, corresponding to amino acids 141-190 of Human Bcr.
Specificity:	The antibody detects endogenous levels of BCR protein (region surrounding Asp171).
Formulation:	Phosphate buffered saline (PBS), pH 7.2. State: Aff - Purified State: Liquid purified Ig fraction Preservative: 0.05% Sodium azide
Concentration:	1.0 mg/ml
Purification:	Affinity-purified from rabbit antiserum by affinity chromatography using epitope-specific immunogen (> 95% pure by SDS-PAGE)
Conjugation:	Unconjugated
Storage:	Store undiluted at 2-8°C for one month or (in aliquots) at -20°C for longer. Avoid repeated freezing and thawing.
Stability:	Shelf life: one year from despatch.
Predicted Protein Size:	~160 kDa
Gene Name:	BCR, RhoGEF and GTPase activating protein
Database Link:	<a href="#">Entrez Gene 613 Human P11274</a>



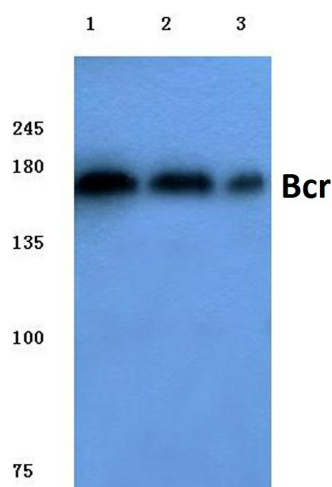
[View online »](#)

**Background:**

The Bcr gene, mapping on chromosome 22, was initially identified on the basis of its fusion with the c-Abl proto-oncogene on chromosome 9 resulting in the generation of the Philadelphia chromosome in 90-95% of patients with chronic myelogenous leukemia (CML). The Bcr gene encodes for the Breakpoint cluster region protein (Bcr). A consequence of this translocation is the generation of a Bcr/c-Abl mRNA encoding an activated c-Abl protein kinase. The Bcr gene has been shown to encode a 160 kDa GTPase-activating protein (GAP) specific for the Ras-related GTP-binding protein, Rac 1 p21. While it has been speculated that the Bcr protein may also stimulate Rac 2 p21 GTPase activity, it has no effect on Ras p21 or Rho p21 GTPases. It is of interest that the GAP domain of Bcr maps outside of the region that remains on chromosome 22 (Philadelphia chromosome) in CML.

**Synonyms:**

Breakpoint cluster region protein, BCR1, D22S11, NY-REN-26

**Product images:**


Western blot (WB) analysis of Bcr antibody at 1/500 dilution Lane 1:HepG2 cell lysate Lane 2:Mouse brain tissue lysate Lane 3:Rat brain tissue lysate