

Product datasheet for **AP06027PU-N**

BAX Rabbit Polyclonal Antibody

Product data:

Product Type:	Primary Antibodies
Applications:	IHC, IP, WB
Recommended Dilution:	Western blot: 1/500-1/1000. Immunohistochemistry on Paraffin sections: 1/50-1/200. Immunoprecipitation: 1/50-1/200.
Reactivity:	Human, Mouse, Rat
Host:	Rabbit
Clonality:	Polyclonal
Immunogen:	Synthetic peptide, corresponding to the N-terminus of Human Bax.
Specificity:	This antibody detects endogenous levels of Bax- $\alpha/\beta/\delta/\epsilon/\sigma$ protein (region surrounding Ser4).
Formulation:	Phosphate buffered saline (PBS), pH 7.2 State: Aff - Purified State: Liquid purified Ig fraction Preservative: 0.05% Sodium azide
Concentration:	1.0 mg/ml
Purification:	Affinity chromatography using epitope-specific immunogen (> 95% pure by SDS-PAGE)
Conjugation:	Unconjugated
Storage:	Store undiluted at 2-8°C for one month or (in aliquots) at -20°C for longer. Avoid repeated freezing and thawing.
Stability:	Shelf life: one year from despatch.
Predicted Protein Size:	~21 kDa
Gene Name:	BCL2 associated X protein
Database Link:	Entrez Gene 581 Human Q07812



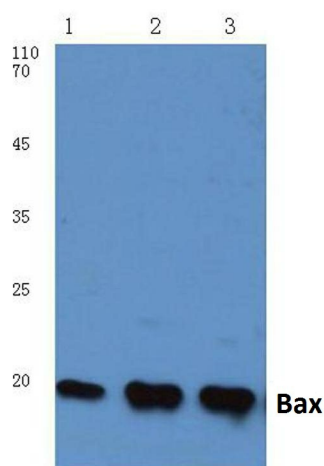
[View online »](#)

Background:

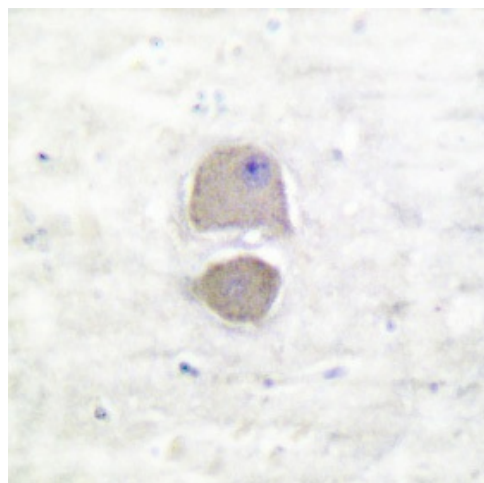
The Bcl-2 gene was isolated at the chromosomal breakpoint of t-bearing follicular B cell lymphomas. Bcl-2 blocks cell death following a variety of stimuli and confers a death-sparing effect to certain hematopoietic cell lines following growth factor withdrawal. Bcl-2 is localized to outer mitochondrial membranes and endoplasmic reticulum as well as nuclear membranes. A related protein, designated Bax p21 (for Bcl-associated X protein), has extensive amino acid homology with Bcl-2 and both homodimerizes and forms heterodimers with Bcl-2. Overexpression of Bax accelerates apoptotic death induced by cytokine deprivation in an IL-3 dependent cell line, and Bax also counters the death repressor activity of Bcl-2.

Synonyms:

Apoptosis regulator BAX, BCL2L4, Bcl2-L-4

Product images:

Western blot (WB) analysis of Bax antibody at 1/500 dilution Lane 1: MCF-7 cell lysate Lane 2: Raw264.7 cell lysate Lane 3: Rat brain tissue lysate



Immunohistochemical analysis in paraffin-embedded human brain tissue using Bax antibody.