

Product datasheet for **AP06025PU-M**

BAD Rabbit Polyclonal Antibody

Product data:

Product Type:	Primary Antibodies
Applications:	ELISA, IHC, WB
Recommended Dilution:	Western blot: 1/500-1/1000. Immunohistochemistry on Paraffin sections: 1/50-1/200.
Reactivity:	Human, Mouse, Rat
Host:	Rabbit
Clonality:	Polyclonal
Immunogen:	Synthetic peptide, corresponding to amino acids 112-163 of Human Bad.
Specificity:	This antibody detects endogenous levels of BAD / Bcl-2-like 8 protein (region surrounding Arg149).
Formulation:	Phosphate buffered saline (PBS), pH 7.2 State: Aff - Purified State: Liquid purified Ig fraction Preservative: 0.05% Sodium azide
Concentration:	1.0 mg/ml
Purification:	Affinity-chromatography using epitope-specific immunogen and the purity is > 95% (by SDS-PAGE)
Conjugation:	Unconjugated
Storage:	Store undiluted at 2-8°C for one month or (in aliquots) at -20°C for longer. Avoid repeated freezing and thawing.
Stability:	Shelf life: one year from despatch.
Predicted Protein Size:	~24 kDa
Gene Name:	BCL2 associated agonist of cell death
Database Link:	Entrez Gene 572 Human Q92934

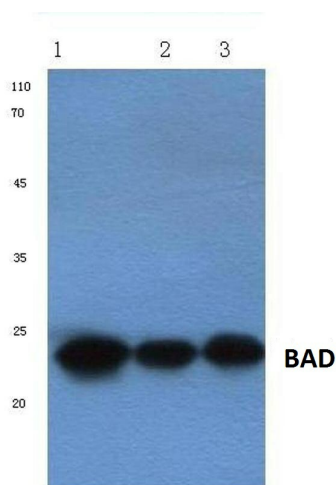
[View online »](#)

Background:

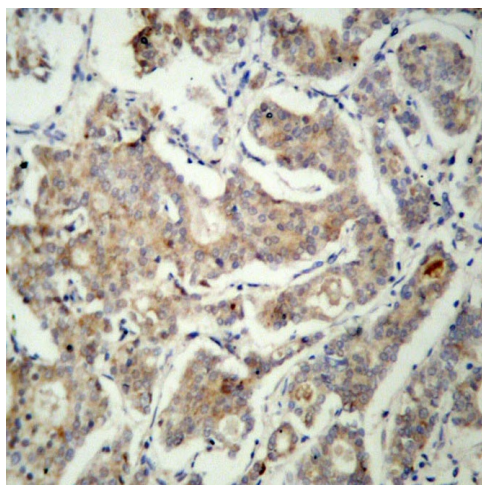
The Bcl-2 family of proteins is characterized by its ability to modulate cell death (apoptosis) under a broad range of physiologic conditions. Bcl-2 and several related proteins function to inhibit apoptosis, while other members of the Bcl-2 family, such as Bax and Bak, enhance cell death under various conditions. For instance, Bcl-xL represses cell death, while its shorter form, Bcl-xS, promotes apoptosis. A protein designated Bad exhibits homology to Bcl-2, limited to the BH1 and BH2 domains. Bad functions to dimerize with Bcl-xL and with Bcl-2, but not with Bax, Bcl-xS, Mcl-1, A1 or itself. In mammalian cells, Bad binds with greater affinity to Bcl-xL than to Bcl-2, and reverses the death repressor activity of Bcl-xL but not Bcl-2. Dimerization of Bad with Bcl-xL results in displacement of Bax from Bcl-xL:Bax complexes, thereby causing restoration of Bax-mediated apoptosis.

Synonyms:

BAD, BBC6, BCL2L8, Bcl-2-like protein 8, Bcl2-L-8

Product images:


Western blot (WB) analysis of Bad antibody at 1/500 dilution Lane 1:LO2 cell lysate Lane 2:Raw264.7 cell lysate Lane 3:Rat brain tissue lysate



Immunohistochemical analysis in paraffin-embedded human breast carcinoma tissue using BAD / Bcl-2-like 8 antibody.