

## Product datasheet for **AP06024PU-N**

### ATF 4 (ATF4) Rabbit Polyclonal Antibody

#### Product data:

|                         |  |
|-------------------------|--|
| Product Type:           | Primary Antibodies   |
| Applications:           | ELISA, IHC, WB   |
| Recommended Dilution:   | <b>Western blot:</b> 1/500-1/1000.<br><b>Immunohistochemistry on Paraffin sections:</b> 1/50-1/200.  |
| Reactivity:             | Human, Rat   |
| Host:                   | Rabbit   |
| Clonality:              | Polyclonal   |
| Immunogen:              | Synthetic peptide, corresponding to amino acids 200-250 of Human ATF4.   |
| Specificity:            | This antibody detects endogenous levels of ATF4 protein (region surrounding Arg239).   |
| Formulation:            | Phosphate buffered saline (PBS), pH 7.2<br>State: Aff - Purified<br>State: Liquid purified Ig fraction (> 95% pure by SDS-PAGE).<br>Preservative: 0.05% Sodium azide |
| Concentration:          | 1.0 mg/ml  |
| Purification:           | Affinity chromatography using epitope-specific immunogen.  |
| Conjugation:            | Unconjugated   |
| Storage:                | Store undiluted at 2-8°C for one month or (in aliquots) at -20°C for longer.<br>Avoid repeated freezing and thawing.   |
| Stability:              | Shelf life: One year from despatch.  |
| Predicted Protein Size: | ~ 42 kDa   |
| Gene Name:              | activating transcription factor 4  |
| Database Link:          | <a href="#">Entrez Gene 468 Human P18848</a>   |



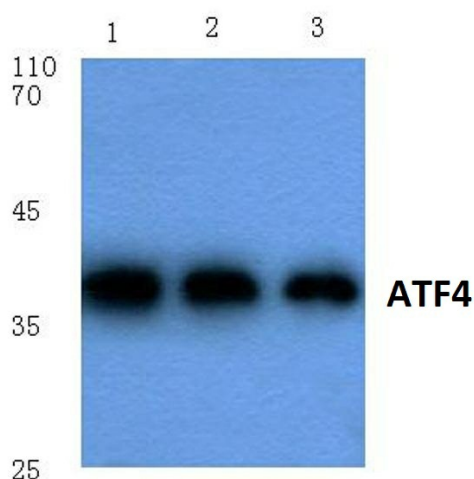
[View online »](#)

**Background:**

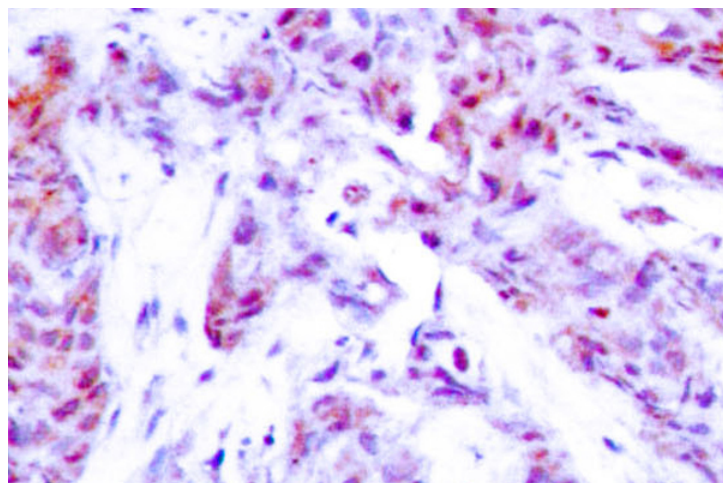
ATF4 is a transcription factor that was originally identified as a widely expressed mammalian DNA binding protein that could bind a tax-responsive enhancer element in the LTR of HTLV1. The encoded protein was also isolated and characterized as the cAMP-response element binding protein 2 (CREB2). The protein encoded by this gene belongs to a family of DNA-binding proteins that includes the AP1 family of transcription factors, cAMP-response element binding proteins (CREBs) and CREB-like proteins. These transcription factors share a leucine zipper region that is involved in protein-protein interactions, located C-terminal to a stretch of basic amino acids that functions as a DNA binding domain (referenced from Entrez gene).

**Synonyms:**

CREB2, CREB-2, TXREB, Activating transcription factor 4, ATF-4

**Product images:**

Western blot (WB) analysis of ATF4 antibody at 1/500 dilution. Lane 1: MCF-7 cell lysate, Lane 2: Mouse brain tissue lysate, Lane 3: Rat brain tissue lysate.



Immunohistochemistry (IHC) analysis of ATF4 antibody in paraffin-embedded human breast carcinoma tissue.