

## Product datasheet for **AP06024PU-M**

### ATF 4 (ATF4) Rabbit Polyclonal Antibody

#### Product data:

Product Type:	Primary Antibodies
Applications:	ELISA, IHC, WB
Recommended Dilution:	<b>Western blot:</b> 1/500-1/1000. <b>Immunohistochemistry on Paraffin sections:</b> 1/50-1/200.
Reactivity:	Human, Rat
Host:	Rabbit
Clonality:	Polyclonal
Immunogen:	Synthetic peptide, corresponding to amino acids 200-250 of Human ATF4.
Specificity:	This antibody detects endogenous levels of ATF4 protein (region surrounding Arg239).
Formulation:	Phosphate buffered saline (PBS), pH 7.2 State: Aff - Purified State: Liquid purified Ig fraction (> 95% pure by SDS-PAGE). Preservative: 0.05% Sodium azide
Concentration:	1.0 mg/ml
Purification:	Affinity chromatography using epitope-specific immunogen.
Conjugation:	Unconjugated
Storage:	Store undiluted at 2-8°C for one month or (in aliquots) at -20°C for longer. Avoid repeated freezing and thawing.
Stability:	Shelf life: One year from despatch.
Predicted Protein Size:	~ 42 kDa
Gene Name:	activating transcription factor 4
Database Link:	<a href="#">Entrez Gene 468 Human P18848</a>

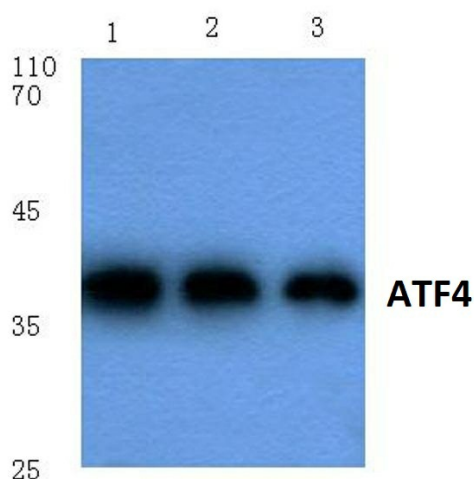
[View online »](#)

**Background:**

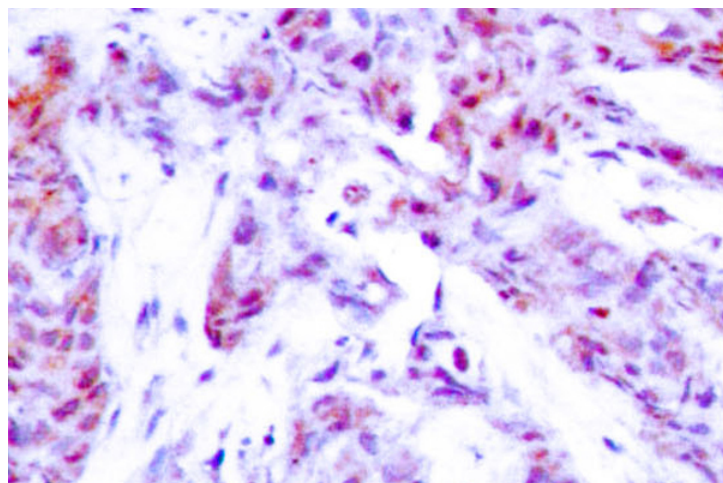
ATF4 is a transcription factor that was originally identified as a widely expressed mammalian DNA binding protein that could bind a tax-responsive enhancer element in the LTR of HTLV1. The encoded protein was also isolated and characterized as the cAMP-response element binding protein 2 (CREB2). The protein encoded by this gene belongs to a family of DNA-binding proteins that includes the AP1 family of transcription factors, cAMP-response element binding proteins (CREBs) and CREB-like proteins. These transcription factors share a leucine zipper region that is involved in protein-protein interactions, located C-terminal to a stretch of basic amino acids that functions as a DNA binding domain (referenced from Entrez gene).

**Synonyms:**

CREB2, CREB-2, TXREB, Activating transcription factor 4, ATF-4

**Product images:**


Western blot (WB) analysis of ATF4 antibody at 1/500 dilution Lane 1: MCF-7 cell lysate Lane 2: Mouse brain tissue lysate Lane 3: Rat brain tissue lysate



Immunohistochemistry (IHC) analysis of ATF4 antibody in paraffin-embedded human breast carcinoma tissue.