

## Product datasheet for **AP06020PU-S**

### ATF2 Rabbit Polyclonal Antibody

#### Product data:

Product Type:	Primary Antibodies
Applications:	ELISA, IHC, IP, WB
Recommended Dilution:	<b>Western blot:</b> 1/500-1/1000. <b>Immunoprecipitation:</b> 1/50-1/200. <b>Immunohistochemistry on Paraffin Sections:</b> 1/50-1/200.
Reactivity:	Human, Mouse, Rat
Host:	Rabbit
Clonality:	Polyclonal
Immunogen:	Synthetic peptide, corresponding to amino acids 20-70 of Human ATF2.
Specificity:	This antibody detects endogenous levels of ATF2 protein. (region surrounding Gly56).
Formulation:	Phosphate buffered saline (PBS), pH~7.2 State: Aff - Purified State: Liquid purified Ig fraction (> 95% by SDS-PAGE) Preservative: 0.05% Sodium Azide
Concentration:	1.0 mg/ml
Purification:	Affinity Chromatography using epitope-specific immunogen
Conjugation:	Unconjugated
Storage:	Store undiluted at 2-8°C for one month or (in aliquots) at -20°C for longer. Avoid repeated freezing and thawing.
Stability:	Shelf life: one year from despatch.
Predicted Protein Size:	~55 to 75 kDa
Gene Name:	activating transcription factor 2
Database Link:	<a href="#">Entrez Gene 1386 Human P15336</a>



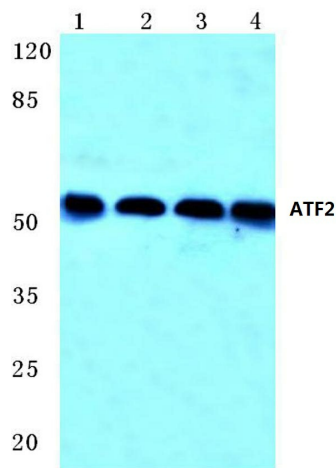
[View online »](#)

**Background:**

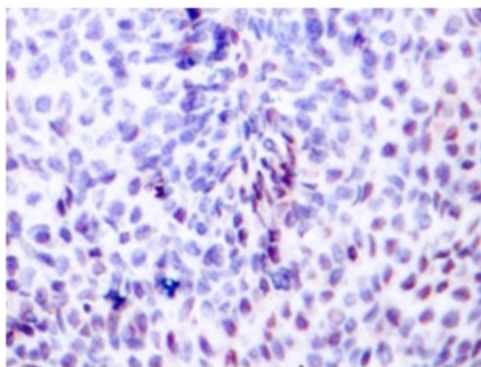
The transcription factor ATF-2 (also called CRE-BP1) binds to both AP-1 and CRE DNA response elements and is a member of the ATF/CREB family of leucine zipper proteins. ATF-2 interacts with a variety of viral oncoproteins and cellular tumor suppressors and is a target of the SAPK/JNK and p38 MAP kinase signaling pathways. Various forms of cellular stress, including genotoxic agents, inflammatory cytokines and UV irradiation, stimulate the transcriptional activity of ATF-2. Cellular stress activates ATF-2 by phosphorylation of Thr69 and Thr71. Both SAPK and p38 MAPK have been shown to phosphorylate ATF-2 at these sites in vitro and in cells transfected with ATF-2. Mutations of these sites result in the loss of stress-induced transcription by ATF-2. In addition, mutations at these sites reduce the ability of E1A and Rb to stimulate gene expression via ATF-2.

**Synonyms:**

ATF-2, CREB2, CREBP1, Activating transcription factor 2, CRE-BP1, HB16, CREB-2

**Product images:**

Western blot (WB) analysis of ATF2 antibody at 1/500 dilution Lane 1:Hela whole cell lysate Lane 2:MCF-7 whole cell lysate Lane 3:PC12 whole cell lysate Lane 4:NIH-3T3 whole cell lysate



Immunohistochemistry analysis of ATF2 antibody in paraffin-embedded human breast carcinoma tissue.