

## Product datasheet for **AP06018PU-N**

### ASK1 (MAP3K5) Rabbit Polyclonal Antibody

#### Product data:

Product Type:	Primary Antibodies
Applications:	ELISA, IHC, WB
Recommended Dilution:	<b>Western blot:</b> 1/500-1/1000. <b>Immunohistochemistry on Paraffin sections:</b> 1/50-1/200.
Reactivity:	Human, Mouse
Host:	Rabbit
Clonality:	Polyclonal
Immunogen:	Synthetic peptide, corresponding to amino acids 924-978 of Human ASK1.
Specificity:	This antibody detects endogenous levels of MEKK5 / ASK1 protein (region surrounding Glu960).
Formulation:	Phosphate buffered saline (PBS), pH 7.2 State: Aff - Purified State: Liquid purified Ig fraction (> 95% pure by SDS-PAGE). Preservative: 0.05% Sodium azide
Concentration:	1.0 mg/ml
Purification:	Affinity chromatography using epitope-specific immunogen.
Conjugation:	Unconjugated
Storage:	Store undiluted at 2-8°C for one month or (in aliquots) at -20°C for longer. Avoid repeated freezing and thawing.
Stability:	Shelf life: one year from despatch.
Predicted Protein Size:	~155 kDa
Gene Name:	mitogen-activated protein kinase kinase kinase 5
Database Link:	<a href="#">Entrez Gene 4217 Human Q99683</a>



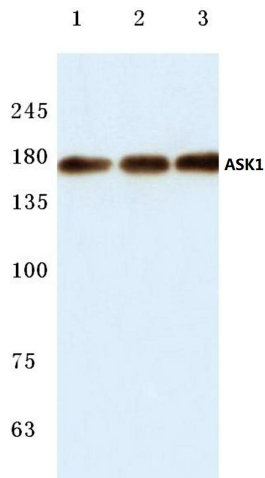
[View online »](#)

**Background:**

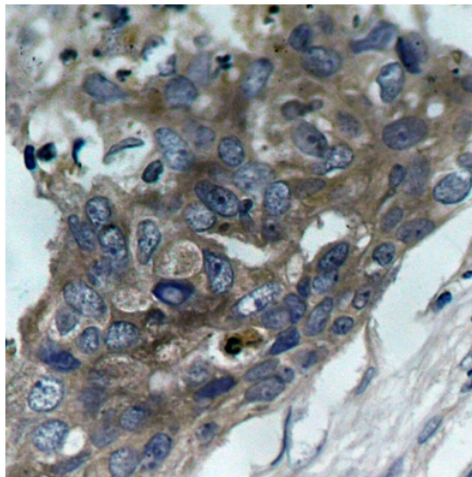
Mitogen-activated protein (MAP) kinase cascades are activated by various extracellular stimuli including growth factors. The MEK kinases (also called MAP kinase kinases) phosphorylate and activate the MAP kinases, including ERK, JNK and p38. The MEK kinases characterized to date include Raf-1, Raf-B, MOS, MEK kinase-1, MEK kinase-2, MEK kinase-3, MEK kinase-4 and ASK 1 (also designated MEK kinase-5). MEK kinase-1 has been shown to phosphorylate MEK-1 via a Raf-independent pathway. Evidence suggests that MEK-3 is preferentially activated by MEK kinase-3 and that MEK-4 is activated by both MEK kinase-2 and MEK kinase-3. MEK kinase-4 has been shown to specifically activate the JNK pathway. ASK1 activates both MEK-4 and MEK-3/MEK-6 pathways.

**Synonyms:**

MAPK/ERK kinase kinase 5, MAPKKK5, MAP3K5

**Product images:**


Western blot (WB) analysis of ASK1 antibody at 1/500 dilution Lane 1:HEK293T cell lysate Lane 2:PC12 cell lysate Lane 3:Mouse heart tissue lysate



Immunohistochemical analysis in paraffin-embedded human breast carcinoma tissue using of MEKK5 / ASK1 antibody.