

Product datasheet for **AP06015PU-S**

APC Rabbit Polyclonal Antibody

Product data:

| | |
|-------------------------|-----------------------------------------------------------------------------------------------------------------------------------------------|
| Product Type: | Primary Antibodies |
| Applications: | ELISA, IF, IHC, WB |
| Recommended Dilution: | Western blot: 1/500-1/1000. Immunohistochemistry on Paraffin sections: 1/50-1/200. Immunofluorescence: 1/50-1/200. |
| Reactivity: | Human, Mouse, Rat |
| Host: | Rabbit |
| Clonality: | Polyclonal |
| Immunogen: | Synthetic peptide, corresponding to the C-terminal of Human APC. |
| Specificity: | This antibody detects endogenous levels of APC / DP2.5 protein (region surrounding Gln2829). |
| Formulation: | Phosphate buffered saline (PBS), pH 7.2 State: Aff - Purified State: Liquid purified Ig fraction Preservative: 0.05% Sodium azide |
| Concentration: | 1.0 mg/ml |
| Purification: | Affinity chromatography using epitope-specific immunogen (> 95% pure by SDS-PAGE) |
| Conjugation: | Unconjugated |
| Storage: | Store undiluted at 2-8°C for one month or (in aliquots) at -20°C for longer. Avoid repeated freezing and thawing. |
| Stability: | Shelf life: one year from despatch. |
| Predicted Protein Size: | ~310 kDa |
| Gene Name: | adenomatous polyposis coli |
| Database Link: | Entrez Gene 324 Human P25054 |



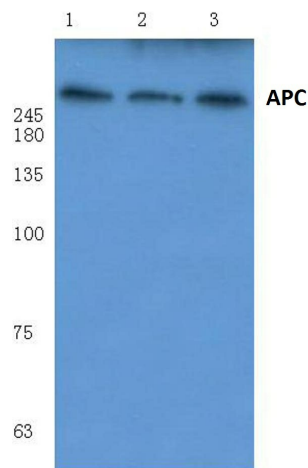
[View online »](#)

Background:

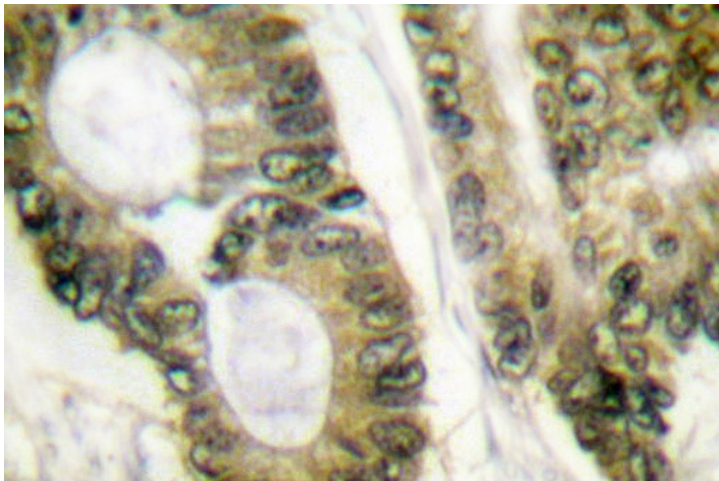
Adenomatous polyposis coli (APC) is a protein that plays a critical role in several cellular processes. APC is a tumor suppressor, regulates cell division, helps ensure that the number of chromosomes in a cell is correct following cell division and associates with other proteins involved in cell attachment and signaling. APC regulates β -catenin levels through Wnt-signaling and is involved in actin cytoskeletal integrity, cell-cell adhesion and cell migration. Defects in this gene cause familial adenomatous polyposis (FAP), an autosomal dominant pre-malignant disease that usually progresses to malignancy. Disease-associated mutations tend to be clustered in a small region designated the mutation cluster region (MCR) and result in a truncated protein product.

Synonyms:

Adenomatous polyposis coli protein

Product images:

Western blot (WB) analysis of APC antibody at 1/500 dilution Lane 1:Hela cell lysate Lane 2:HEK293T cell lysate Lane 3:Rat testis tissue lysate



Immunohistochemical analysis in paraffin-embedded human lung carcinoma tissue using APC / DP2.5 antibody.