

## Product datasheet for **AP06015PU-M**

### APC Rabbit Polyclonal Antibody

#### Product data:

Product Type:	Primary Antibodies
Applications:	ELISA, IF, IHC, WB
Recommended Dilution:	<b>Western blot:</b> 1/500-1/1000. <b>Immunohistochemistry on Paraffin sections:</b> 1/50-1/200. <b>Immunofluorescence:</b> 1/50-1/200.
Reactivity:	Human, Mouse, Rat
Host:	Rabbit
Clonality:	Polyclonal
Immunogen:	Synthetic peptide, corresponding to the C-terminal of Human APC.
Specificity:	This antibody detects endogenous levels of APC / DP2.5 protein (region surrounding Gln2829).
Formulation:	Phosphate buffered saline (PBS), pH 7.2 State: Aff - Purified State: Liquid purified Ig fraction Preservative: 0.05% Sodium azide
Concentration:	1.0 mg/ml
Purification:	Affinity chromatography using epitope-specific immunogen (> 95% pure by SDS-PAGE)
Conjugation:	Unconjugated
Storage:	Store undiluted at 2-8°C for one month or (in aliquots) at -20°C for longer. Avoid repeated freezing and thawing.
Stability:	Shelf life: one year from despatch.
Predicted Protein Size:	~310 kDa
Gene Name:	adenomatous polyposis coli
Database Link:	<a href="#">Entrez Gene 324 Human P25054</a>



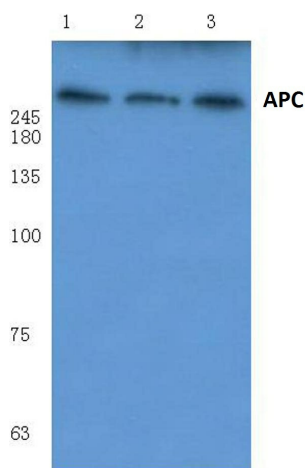
[View online »](#)

**Background:**

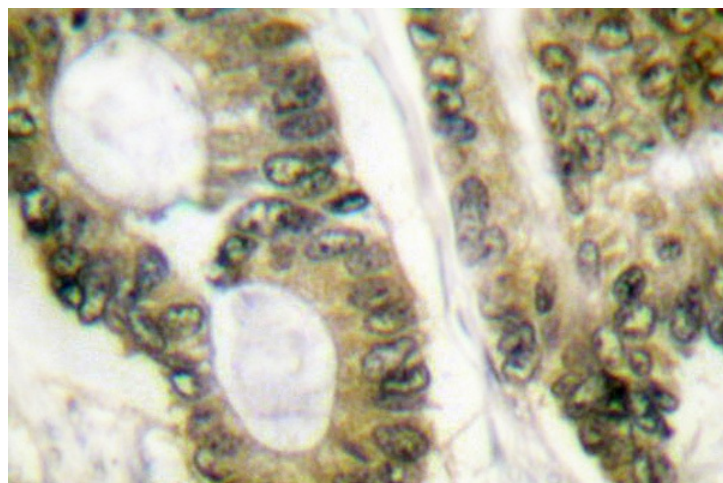
Adenomatous polyposis coli (APC) is a protein that plays a critical role in several cellular processes. APC is a tumor suppressor, regulates cell division, helps ensure that the number of chromosomes in a cell is correct following cell division and associates with other proteins involved in cell attachment and signaling. APC regulates  $\beta$ -catenin levels through Wnt-signaling and is involved in actin cytoskeletal integrity, cell-cell adhesion and cell migration. Defects in this gene cause familial adenomatous polyposis (FAP), an autosomal dominant pre-malignant disease that usually progresses to malignancy. Disease-associated mutations tend to be clustered in a small region designated the mutation cluster region (MCR) and result in a truncated protein product.

**Synonyms:**

Adenomatous polyposis coli protein

**Product images:**


Western blot (WB) analysis of APC antibody at 1/500 dilution Lane 1: Hela cell lysate Lane 2: HEK293T cell lysate Lane 3: Rat testis tissue lysate



Immunohistochemical analysis in paraffin-embedded human lung carcinoma tissue using APC / DP2.5 antibody.