

Product datasheet for **AP06014PU-M**

APAF1 Rabbit Polyclonal Antibody

Product data:

Product Type:	Primary Antibodies
Applications:	ELISA, IF, IHC, WB
Recommended Dilution:	Western blot: 1/500-1/1000. Immunohistochemistry on Paraffin sections: 1/50-1/200. Immunofluorescence: 1/50-1/200.
Reactivity:	Human
Host:	Rabbit
Clonality:	Polyclonal
Immunogen:	Synthetic peptide, corresponding to amino acids 301-350 of Human Apaf-1-ALT.
Specificity:	This antibody detects endogenous levels of APAF1 protein (region surrounding His324).
Formulation:	Phosphate buffered saline (PBS), pH 7.2 State: Aff - Purified State: Liquid purified Ig fraction Preservative: 0.05% Sodium azide
Concentration:	1.0 mg/ml
Purification:	Affinity chromatography using epitope-specific immunogen (> 95% pure; by SDS-PAGE)
Conjugation:	Unconjugated
Storage:	Store undiluted at 2-8°C for one month or (in aliquots) at -20°C for longer. Avoid repeated freezing and thawing.
Stability:	Shelf life: one year from despatch.
Predicted Protein Size:	~38 kDa
Gene Name:	apoptotic peptidase activating factor 1
Database Link:	Entrez Gene 317 Human O14727



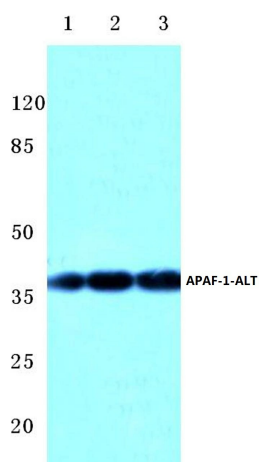
[View online »](#)

Background:

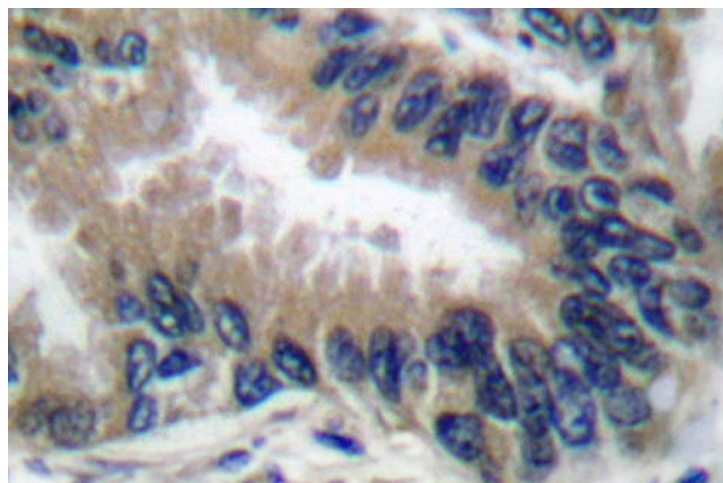
Studies of apoptosis using the nematode *Caenorhabditis elegans* as a model system have identified three genes, *ced-3*, *ced-4* and *ced-9*, as core components in cell death. The *Ced-4* protein functions downstream of the apoptotic inhibitor *Ced-9* and upstream of *Ced-3* to promote cell death. Direct interactions of *Ced-4* with *Ced-9* and *Ced-3* suggest a central role for this protein in the regulation of apoptosis. The mammalian protein APAF1 contains a domain with homology to *Ced-4* and may function in a similar manner by mediating apoptosis downstream of the survival protein Bcl-2 and upstream of the apoptotic inducing caspases. APAF1 has been shown to bind to cytosolic cytochrome c, and it may mediate the activation of caspase-3 by cytochrome c.

Synonyms:

Apaf-1, KIAA0413

Product images:


Western blot (WB) analysis of APAF-1-ALT antibody in extracts from COLO205 cells.



Immunohistochemical analysis using APAF1 antibody in Paraffin-embedded human lung carcinoma tissue.