

Product datasheet for **AP06013PU-N**

AP2 alpha (TFAP2A) Rabbit Polyclonal Antibody

Product data:

Product Type:	Primary Antibodies
Applications:	ELISA, IHC, WB
Recommended Dilution:	Western blot: 1/500-1/1000. Immunohistochemistry on Paraffin sections: 1/50-1/200.
Reactivity:	Human, Mouse, Rat
Host:	Rabbit
Clonality:	Polyclonal
Immunogen:	Synthetic peptide, corresponding to amino acids 401-450 of Human TFAP2A.
Specificity:	This antibody detects endogenous levels of TFAP2A / AP-2 alpha protein (region surrounding Lys431).
Formulation:	Phosphate buffered saline (PBS), pH 7.2 State: Aff - Purified State: Liquid purified Ig fraction Preservative: 0.05% Sodium azide
Concentration:	1.0 mg/ml
Purification:	The antibody was affinity-purified from rabbit antiserum by affinity chromatography using epitope-specific immunogen (> 95%pure by SDS-PAGE).
Conjugation:	Unconjugated
Storage:	Store undiluted at 2-8°C for one month or (in aliquots) at -20°C for longer. Avoid repeated freezing and thawing.
Stability:	Shelf life: one year from despatch.
Predicted Protein Size:	~50 kDa
Gene Name:	transcription factor AP-2 alpha
Database Link:	Entrez Gene 7020 Human P05549

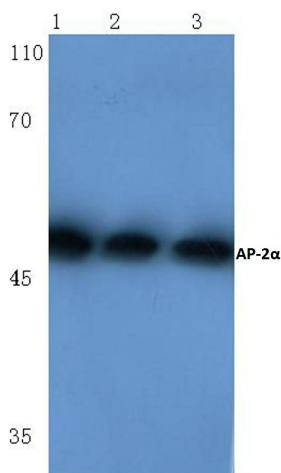
[View online »](#)

Background:

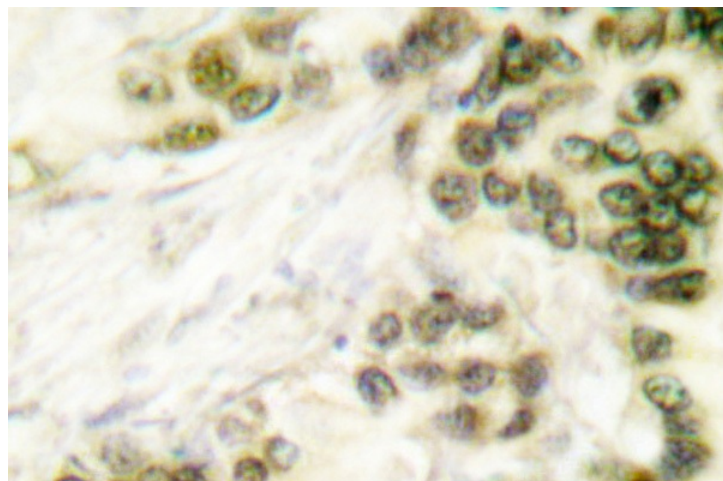
The AP2 proteins are normally expressed in ectodermally derived vertebrate tissues where they are necessary for normal growth and development. The factors have also been implicated in the control of cell proliferation, viral transformation, and oncogenesis. AP2 seems to play an important role in human breast cancer. AP2 alpha is the only AP2 protein required for early morphogenesis of the lens vesicle. AP2 beta appears to be required for normal face and limb development and for proper terminal differentiation and function of renal tubular epithelia.

Synonyms:

AP2TF, TFAP2, AP-2 transcription factor, Activator protein 2, AP2

Product images:


Western blot (WB) analysis of TFAP2A antibody at 1/500 dilution Lane 1: Hela cell lysate Lane 2: Mouse brain tissue lysate Lane 3: Rat kidney tissue lysate



Immunohistochemical analysis in paraffin-embedded human lung carcinoma tissue using TFAP2A / AP-2 alpha antibody.