

## Product datasheet for **AP06012PU-S**

### Annexin VI (ANXA6) Rabbit Polyclonal Antibody

#### Product data:

Product Type:	Primary Antibodies
Applications:	ELISA, IF, IHC, WB
Recommended Dilution:	<b>Western blot:</b> 1/500-1/1000. <b>Immunohistochemistry on Paraffin sections:</b> 1/50-1/200. <b>Immunofluorescence:</b> 1/50-1/200.
Reactivity:	Human
Host:	Rabbit
Clonality:	Polyclonal
Immunogen:	Synthetic peptide, corresponding to the N-terminus of Human Annexin VI.
Specificity:	This antibody detects endogenous levels of Annexin A6 Annexin A6 / ANXA6 protein (region surrounding Ala5).
Formulation:	Phosphate buffered saline (PBS), pH 7.2 State: Aff - Purified State: Liquid purified Ig fraction Preservative: 0.05% Sodium azide
Concentration:	1.0 mg/ml
Purification:	Affinity chromatography using epitope-specific immunogen (> 95%pure by SDS-PAGE).
Conjugation:	Unconjugated
Storage:	Store undiluted at 2-8°C for one month or (in aliquots) at -20°C for longer. Avoid repeated freezing and thawing.
Stability:	Shelf life: one year from despatch.
Predicted Protein Size:	~75 kDa
Gene Name:	annexin A6
Database Link:	<a href="#">Entrez Gene 309 Human P08133</a>



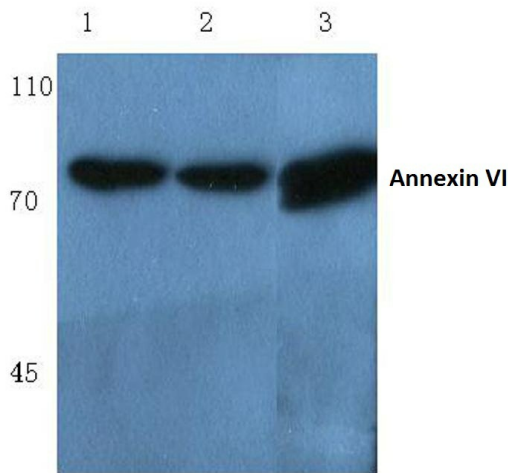
[View online »](#)

**Background:**

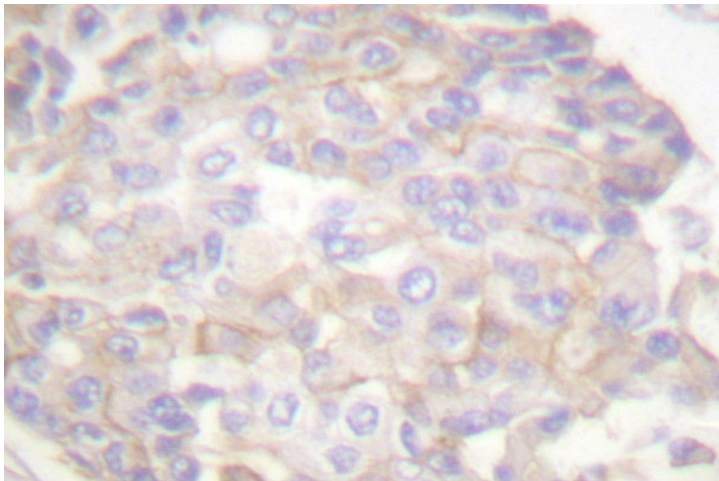
Annexin VI belongs to a family of calcium-dependent membrane and phospholipid binding proteins. Several members of the annexin family have been implicated in membrane-related events along exocytotic and endocytotic pathways. The annexin VI gene is approximately 60 kbp long and contains 26 exons. It encodes a protein of about 68 kDa that consists of eight 68-amino acid repeats separated by linking sequences of variable lengths. It is highly similar to human annexins I and II sequences, each of which contain four such repeats. Annexin VI has been implicated in mediating the endosome aggregation and vesicle fusion in secreting epithelia during exocytosis. Alternatively spliced transcript variants have been described.

**Synonyms:**

ANX6, Annexin-6, Annexin VI, Lipocortin VI, p68, p70, Protein III, Chromobindin-20, 67 kDa calelectrin, Calphobindin-II, CPB-II

**Product images:**


Western blot (WB) analysis of Annexin VI antibody at 1/500 dilution Lane 1:Hela cell lysate Lane 2:sp2/0 cell lysate Lane 3:Rat kidney tissue lysate



Immunohistochemical analysis in paraffin-embedded human breast carcinoma tissue using Annexin A6 / ANXA6 antibody.