

## Product datasheet for **AP06005PU-N**

### AKT1 Rabbit Polyclonal Antibody

#### Product data:

Product Type:	Primary Antibodies
Applications:	ELISA, IHC, WB
Recommended Dilution:	<b>Western blot:</b> 1/500-1/1000. <b>Immunohistochemistry on paraffin sections</b> 1/50-1/200.
Reactivity:	Human, Mouse, Rat
Host:	Rabbit
Clonality:	Polyclonal
Immunogen:	Synthetic peptide, corresponding to amino acids 270-320 of Human AKT1.
Specificity:	This antibody detects endogenous levels of AKT1 / PKB protein. (region surrounding Phe469)
Formulation:	Phosphate buffered saline (PBS), pH 7.2 State: Aff - Purified State: Liquid purified Ig fraction (> 95% pure by SDS-PAGE) Preservative: 0.05% Sodium azide
Concentration:	1.0 mg/ml
Purification:	Affinity-chromatography using epitope-specific immunogen
Conjugation:	Unconjugated
Storage:	Store undiluted at 2-8°C for one month or (in aliquots) at -20°C for longer. Avoid repeated freezing and thawing.
Stability:	Shelf life: one year from despatch.
Predicted Protein Size:	~ 60 kDa
Gene Name:	AKT serine/threonine kinase 1
Database Link:	<a href="#">Entrez Gene 207 Human P31749</a>



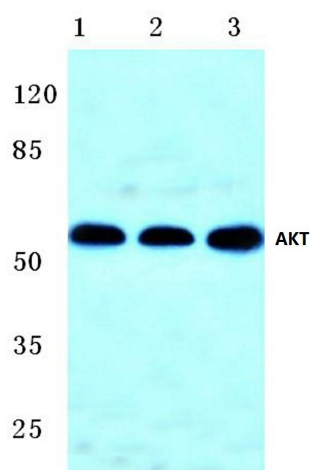
[View online »](#)

**Background:**

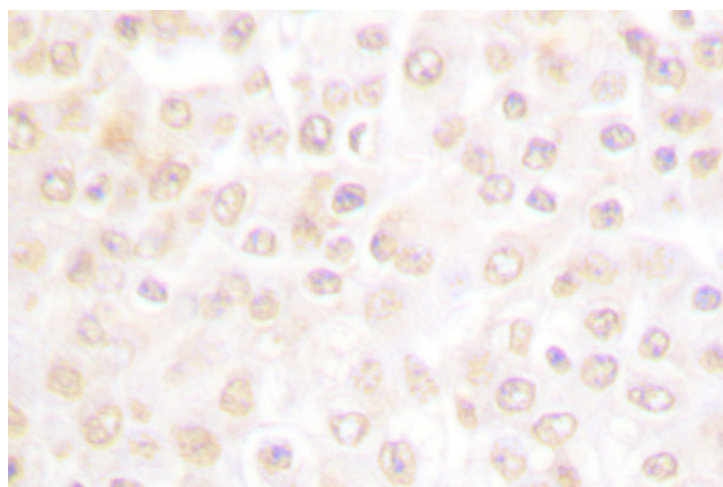
AKT, also known as protein kinase B (PKB), is a 57 kDa serine/threonine protein kinase. There are three mammalian isoforms of Akt: AKT1 (PKB alpha), AKT2 (PKB beta) and AKT3 (PKB gamma) with AKT2 and AKT3 being approximately 82% identical with the AKT1 isoform. Each isoform has a pleckstrin homology (PH) domain, a kinase domain and a carboxy terminal regulatory domain. AKT was originally cloned from the retrovirus AKT8, and is a key regulator of many signal transduction pathways. Its tight control over cell proliferation and cell viability are manifold; overexpression or inappropriate activation of AKT has been seen in many types of cancer.

**Synonyms:**

Akt-1, RAC-PK-alpha, Protein kinase B, C-AKT

**Product images:**

Western blot analysis of AKT antibody at 1/500 dilution Lane 1: HeLa whole cell lysate Lane 2: NIH-3T3 whole cell lysate Lane 3: C12 whole cell lysate.



Immunohistochemistry analyzes of Akt antibody in paraffin-embedded human prostate carcinoma tissue.