

## Product datasheet for **AP06003PU-N**

### alpha Adducin (ADD1) Rabbit Polyclonal Antibody

#### Product data:

Product Type:	Primary Antibodies
Applications:	ELISA, IHC, IP, WB
Recommended Dilution:	<b>Western blot:</b> 1/500-1/1000. <b>Immunoprecipitation:</b> 1/50-1/200. <b>Immunofluorescence:</b> 1/50-1/200. <b>Immunohistochemistry on Paraffin sections:</b> 1/50-1/200.
Reactivity:	Human, Mouse, Rat
Host:	Rabbit
Clonality:	Polyclonal
Immunogen:	Synthetic peptide, corresponding to amino acids 700-750 of Human Adducin $\alpha$
Specificity:	This antibody detects endogenous levels of ADD1 protein. (region surrounding Lys720)
Formulation:	Phosphate buffered saline (PBS), pH~7.2 State: Aff - Purified State: Liquid purified Ig fraction (> 95% pure by SDS-PAGE) Preservative: 0.05% Sodium Azide
Concentration:	1.0 mg/ml
Purification:	Affinity Chromatography using epitope-specific immunogen
Conjugation:	Unconjugated
Storage:	Store undiluted at 2-8°C for one month or (in aliquots) at -20°C for longer. Avoid repeated freezing and thawing.
Stability:	Shelf life: one year from despatch.
Predicted Protein Size:	~81 kDa
Gene Name:	adducin 1
Database Link:	<a href="#">Entrez Gene 118 Human P35611</a>



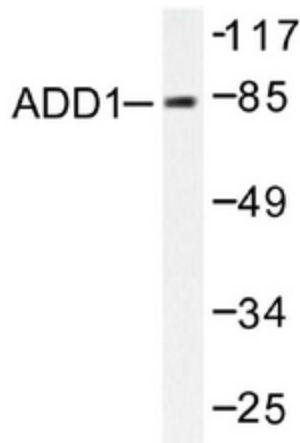
[View online »](#)

**Background:**

Adducins are a family of cytoskeletal proteins encoded by three genes (alpha, beta, gamma). Adducin is a heterodimeric protein that consists of related subunits, which are produced from distinct genes but share a similar structure. Alpha and beta adducin include a protease-resistant N-terminal region and a protease-sensitive, hydrophilic C-terminal region. Alpha and gamma adducins are ubiquitously expressed. In contrast, beta adducin is expressed at high levels in brain and hematopoietic tissues. Adducin binds with high affinity to Ca<sup>2+</sup>/calmodulin and is a substrate for protein kinases A and C. Alternative splicing results in multiple variants encoding distinct isoforms; however, not all variants have been fully described.

**Synonyms:**

ADDA

**Product images:**

Western blot analysis of ADD1 Antibody antibody in extracts from HeLa cells.



Immunohistochemistry analysis of ADD1 Antibody antibody in paraffin-embedded human brain tissue.