

## Product datasheet for **AP06003PU-M**

### alpha Adducin (ADD1) Rabbit Polyclonal Antibody

#### Product data:

|                         |  |
|-------------------------|--|
| Product Type:           | Primary Antibodies   |
| Applications:           | ELISA, IHC, IP, WB   |
| Recommended Dilution:   | <b>Western blot:</b> 1/500-1/1000.<br><b>Immunoprecipitation:</b> 1/50-1/200.<br><b>Immunofluorescence:</b> 1/50-1/200.<br><b>Immunohistochemistry on Paraffin sections:</b> 1/50-1/200. |
| Reactivity:             | Human, Mouse, Rat  |
| Host:                   | Rabbit   |
| Clonality:              | Polyclonal   |
| Immunogen:              | Synthetic peptide, corresponding to amino acids 700-750 of Human Adducin $\alpha$  |
| Specificity:            | This antibody detects endogenous levels of ADD1 protein.<br>(region surrounding Lys720)  |
| Formulation:            | Phosphate buffered saline (PBS), pH~7.2<br>State: Aff - Purified<br>State: Liquid purified Ig fraction (> 95% pure by SDS-PAGE)<br>Preservative: 0.05% Sodium Azide                      |
| Concentration:          | 1.0 mg/ml  |
| Purification:           | Affinity Chromatography using epitope-specific immunogen   |
| Conjugation:            | Unconjugated   |
| Storage:                | Store undiluted at 2-8°C for one month or (in aliquots) at -20°C for longer.<br>Avoid repeated freezing and thawing.   |
| Stability:              | Shelf life: one year from despatch.  |
| Predicted Protein Size: | ~81 kDa  |
| Gene Name:              | adducin 1  |
| Database Link:          | <a href="#">Entrez Gene 118 Human P35611</a>   |



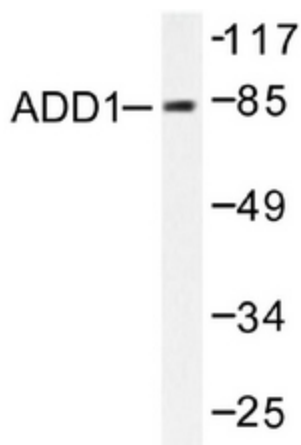
[View online »](#)

**Background:**

Adducins are a family of cytoskeletal proteins encoded by three genes (alpha, beta, gamma). Adducin is a heterodimeric protein that consists of related subunits, which are produced from distinct genes but share a similar structure. Alpha and beta adducin include a protease-resistant N-terminal region and a protease-sensitive, hydrophilic C-terminal region. Alpha and gamma adducins are ubiquitously expressed. In contrast, beta adducin is expressed at high levels in brain and hematopoietic tissues. Adducin binds with high affinity to  $\text{Ca}^{2+}$ /calmodulin and is a substrate for protein kinases A and C. Alternative splicing results in multiple variants encoding distinct isoforms; however, not all variants have been fully described.

**Synonyms:**

ADDA

**Product images:**


Western blot analysis of ADD1 Antibody antibody in extracts from HeLa cells.



Immunohistochemistry analysis of ADD1 Antibody antibody in paraffin-embedded human brain tissue.