

Product datasheet for **AP06002PU-N**

ACTG2 Rabbit Polyclonal Antibody

Product data:

Product Type:	Primary Antibodies
Applications:	ELISA, IF, IHC, WB
Recommended Dilution:	Western blot: 1/500-1/1000. Immunohistochemistry on Paraffin sections: 1/50-1/200. Immunofluorescence: 1/50-1/200.
Reactivity:	Human, Mouse, Rat
Host:	Rabbit
Clonality:	Polyclonal
Immunogen:	Synthetic peptide, corresponding to the N-terminal of Human Actin- α 3/ γ 2.
Specificity:	This antibody detects endogenous levels of gamma 2 smooth muscle Actin / ACTG2 (Actin alpha-3/gamma-2) protein (region surrounding Glu2).
Formulation:	Phosphate buffered saline (PBS), pH 7.2 State: Aff - Purified State: Liquid purified Ig fraction (> 95% pure by SDS-PAGE). Preservative: 0.05% Sodium azide
Concentration:	1.0 mg/ml
Purification:	Affinity Chromatography using epitope-specific immunogen.
Conjugation:	Unconjugated
Storage:	Store undiluted at 2-8°C for one month or (in aliquots) at -20°C for longer. Avoid repeated freezing and thawing.
Stability:	Shelf life: one year from despatch.
Predicted Protein Size:	~ 45 kDa
Gene Name:	actin, gamma 2, smooth muscle, enteric
Database Link:	Entrez Gene 72 Human P63267



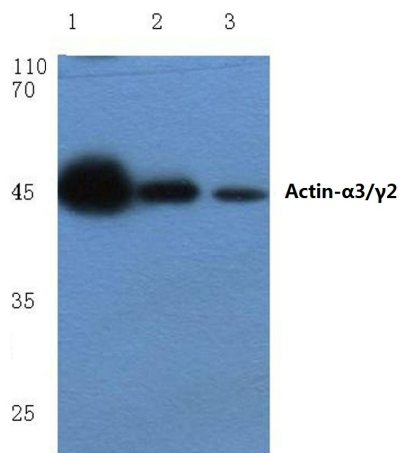
[View online »](#)

Background:

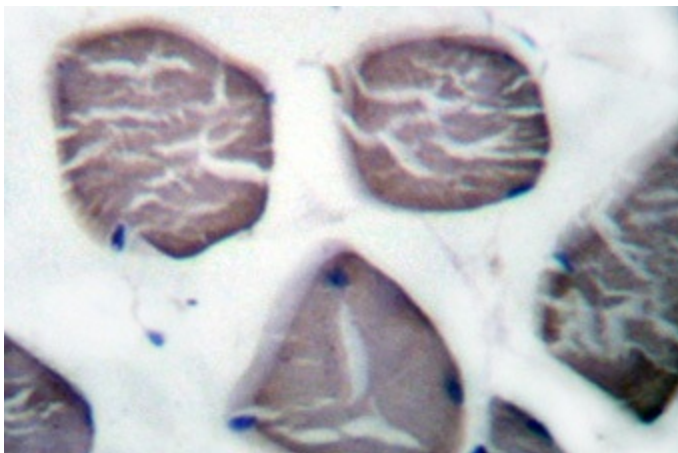
All eukaryotic cells express actin, which often constitutes as much as 50% of total cellular protein. Actin filaments can form both stable and labile structures and are crucial components of microvilli and the contractile apparatus of muscle cells. While lower eukaryotes, such as yeast, have only one actin gene, higher eukaryotes have several isoforms encoded by a family of genes. At least six types of actin are present in mammalian tissues and fall into three classes. alpha actin expression is limited to various types of muscle, whereas beta and gamma are the principle constituents of filaments in other tissues. Members of the small GTPase family regulate the organization of the actin cytoskeleton. Rho controls the assembly of actin stress fibers and focal adhesion, Rac regulates actin filament accumulation at the plasma membrane and Cdc42 stimulates formation of filopodia.

Synonyms:

ACT; ACTA3; ACTE; ACTL3; ACTSG; Alpha-actin-3; Gamma-2-actin; OTTHUMP00000202509

Product images:

Western blot (WB) analysis of Actin-a3/γ2 antibody at 1/500 dilution Lane 1:DLD cell lysate Lane 2:Rat brain tissue lysate Lane 3:Mouse brain tissue lysate



Immunohistochemical analysis using gamma 2 smooth muscle Actin / ACTG2 antibody in Paraffin-embedded human muscle tissue.