

Product datasheet for **AP05819PU-N**

CX3CR1 (175-189) Rabbit Polyclonal Antibody

Product data:

Product Type:	Primary Antibodies
Applications:	IF, WB
Recommended Dilution:	Western blot: 1:500.
Reactivity:	Human
Host:	Rabbit
Isotype:	IgG
Clonality:	Polyclonal
Immunogen:	Peptide corresponding to amino acids 175 to 189 of human CX3CR1.
Specificity:	This antibody recognises CX3CR1, a seven transmembrane protein recently identified as a receptor for fractalkine. CX3CR1 is expressed in a variety of human tissues and mediates leucocyte adhesion and migration.
Formulation:	Phosphate buffered saline containing 0.02% Sodium Azide State: Purified State: Liquid purified IgG
Concentration:	lot specific
Conjugation:	Unconjugated
Storage:	Store the antibody undiluted at 2-8°C for one month or (in aliquots) at -20°C for longer. Avoid repeated freezing and thawing.
Stability:	Shelf life: one year from despatch.
Gene Name:	C-X3-C motif chemokine receptor 1
Database Link:	Entrez Gene 1524 Human P49238



[View online »](#)

Background:

CX3CR1 is one of the chemokine receptors that are required as co-receptors for HIV infection. The genes encoding human, mouse, and rat CX3CR1 were cloned and designated V28 and CMKBRL1, CX3CR1, and RBS11, respectively. The encoded seven transmembrane protein was recently identified as the receptor for a novel transmembrane molecule, fractalkine, and renamed CX3CR1. Recently, CX3CR1 was found to serve as a co-receptor for HIV-1 and HIV-2 envelope fusion and virus infection, which can be inhibited by fractokine. CX3CR1 mediates leukocyte migration and adhesion and has been implicated in tumor metastasis. CX3CR1 is expressed in a variety of human tissues and cell lines.

Synonyms:

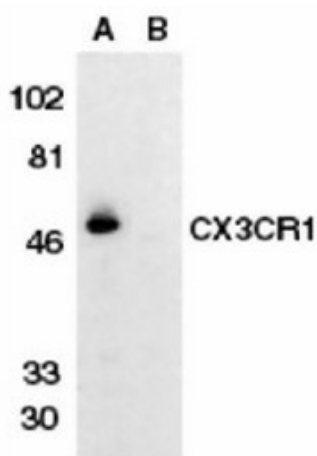
CX3C chemokine receptor 1, C-X3-C CKR-1, CMKBRL1, CMK-BRL-1

Protein Families:

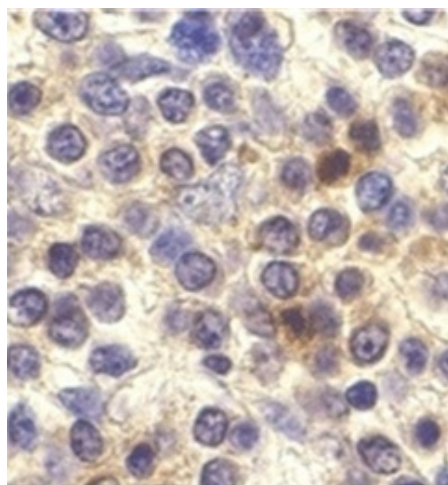
Druggable Genome, GPCR, Transmembrane

Protein Pathways:

Chemokine signaling pathway, Cytokine-cytokine receptor interaction

Product images:

Western blot analysis of CX3CR1 in THP-1 cell lysate in the absence (lane A) or presence (lane B) of blocking peptide with



Immunocytochemical staining of Human spleen with Rabbit anti human CX3CR1