

Product datasheet for **AP05812PU-N**

APAF1 Rabbit Polyclonal Antibody

Product data:

Product Type:	Primary Antibodies
Applications:	IHC, WB
Recommended Dilution:	Western blot: 1/1000-1/2000. Immunohistochemistry on Paraffin Sections: Requires antigen retrieval using heat treatment prior to staining of paraffin sections. Sodium citrate buffer pH 6.0 is recommended for this purpose.
Reactivity:	Human, Mouse
Host:	Rabbit
Isotype:	IgG
Clonality:	Polyclonal
Immunogen:	Synthetic peptide corresponding to amino acids 12-28 of Human Apaf1
Specificity:	This antibody recognises a 130kD band in Western blots.
Formulation:	PBS State: Purified State: Liquid purified IgG fraction Preservative: 0.02% Sodium Azide
Concentration:	lot specific
Purification:	Afinity Chromatography
Conjugation:	Unconjugated
Storage:	Store undiluted at 2-8°C for one month or (in aliquots) at -20°C for longer. Avoid repeated freezing and thawing.
Stability:	Shelf life: one year from despatch.
Gene Name:	apoptotic peptidase activating factor 1
Database Link:	Entrez Gene 317 Human O14727



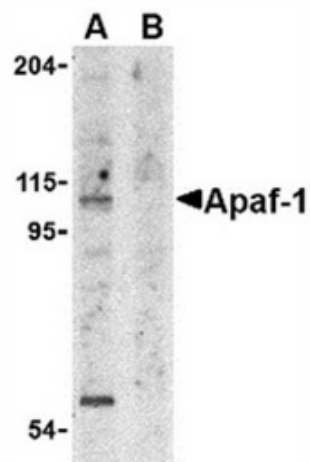
[View online »](#)

Background:

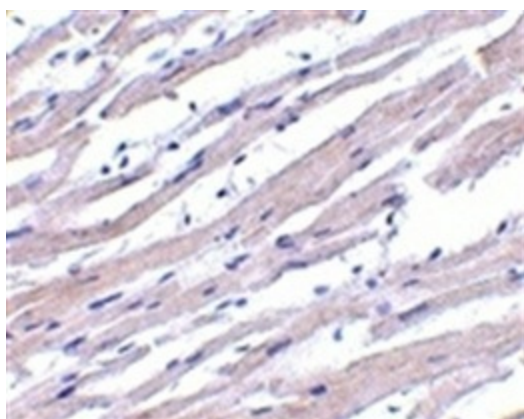
Apaf1 (Apoptosis protease activating factor 1) is the mammalian homologue of the CED-4 cell death protein in *C. Elegans*. Apaf1 binds to cytochrome C and caspase-9 leading to caspase-9 activation, resulting in the beginning of the proteolytic cascade characteristic of apoptosis. Apaf1 can also associate with caspase-4 and caspase-8.

Synonyms:

Apaf-1, KIAA0413

Product images:


Western Blot analysis of whole cell lysate from K562 cells probed with Rabbit anti APAF1 antibody either in the absence (A) or presence (B) of blocking peptide



Immunohistochemical staining of human heart with Rabbit anti APAF1 antibody