

Product datasheet for **AP05789PU-N**

DNase II (DNASE2) (C-term) Rabbit Polyclonal Antibody

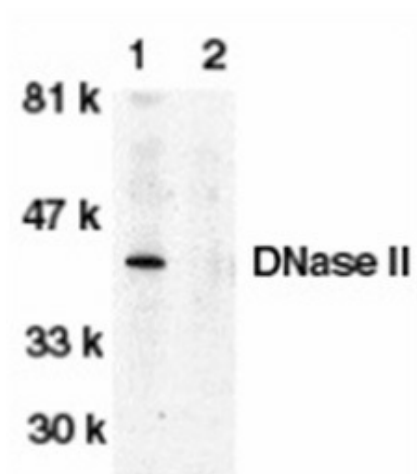
Product data:

Product Type:	Primary Antibodies
Applications:	IHC, WB
Recommended Dilution:	Immunohistochemistry on paraffin sections: 5 µg/ml. Western blot: 0.5 - 1.0 µg/ml; detects a band of approximately 40kDa in human tissue spleen cell lysates.
Reactivity:	Human
Host:	Rabbit
Isotype:	IgG
Clonality:	Polyclonal
Immunogen:	A peptide corresponding to amino acids near the Carboxy terminus of human DNase II precursor.
Specificity:	This antibody recognises DNase II (Deoxyribonuclease II), an enzyme involved in both the condensation of chromatin and the fragmentation of DNA. DNase II is ubiquitously expressed in human tissues.
Formulation:	Phosphate buffered saline containing 0.02% Sodium Azide (NaN ₃) State: Purified State: Liquid purified IgG
Concentration:	lot specific
Conjugation:	Unconjugated
Storage:	Store the antibody undiluted at 2-8°C for one month or (in aliquots) at -20°C for longer. Avoid repeated freezing and thawing.
Stability:	Shelf life: one year from despatch.
Gene Name:	deoxyribonuclease II, lysosomal
Database Link:	Entrez Gene 1777 Human O00115
Synonyms:	Deoxyribonuclease II alpha, Acid DNase, Lysosomal DNase II, DNASE2, DNASE2A, DNL2
Protein Families:	Druggable Genome
Protein Pathways:	Lysosome

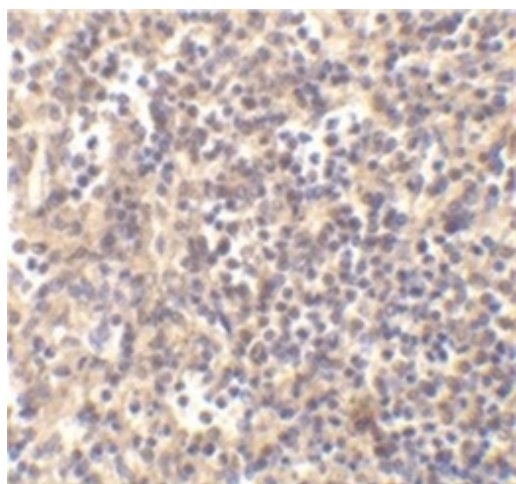


[View online »](#)

Product images:



Western blot analysis of human spleen lysate probed with Rabbit anti Human DNASE-II either in the absence (1) or presence (2) of blocking peptide



Immunohistochemical staining of human spleen with Rabbit anti DNASE-II