

Product datasheet for **AP05788PU-N**

FLIP (CFLAR) (C-term) Rabbit Polyclonal Antibody

Product data:

Product Type:	Primary Antibodies
Applications:	IF, IHC, WB
Recommended Dilution:	Immunohistochemistry on frozen sections: 2 µg/ml. Western blot: 1:1000; detects bands of approximately 35kDa and 25kDa in Jurkat cell lysates. Immunocytochemistry.
Reactivity:	Human, Mouse
Host:	Rabbit
Isotype:	IgG
Clonality:	Polyclonal
Immunogen:	A peptide corresponding to aa191 - 209 at the C-terminus of human FLIP delta/FLIPs form.
Specificity:	This antibody recognises the apoptosis related protein designated FLIP (FLICE inhibitory protein).
Formulation:	Phosphate buffered saline containing 0.02% Sodium Azide (NaN ₃) State: Purified State: Liquid purified IgG
Concentration:	lot specific
Conjugation:	Unconjugated
Storage:	Store the antibody undiluted at 2-8°C for one month or (in aliquots) at -20°C for longer. Avoid repeated freezing and thawing.
Stability:	Shelf life: one year from despatch.
Gene Name:	CASP8 and FADD like apoptosis regulator
Database Link:	Entrez Gene 12633 Mouse Entrez Gene 8837 Human O15519



[View online »](#)

Background:

FLIP interacts with the adaptor protein FADD, and with Caspase-8 (FLICE) and Caspase-10 (FLICE2) to inhibit apoptosis induced by death receptors including CD95, DR3, TRAIL-R and TNFR1.

FLICE inhibitory proteins were initially identified in virus and human and were accordingly designated as v-FLIPs and c-FLIPs. Four splice variants of c-FLIP have been identified and are classified as FLIP alpha, beta, delta and gamma. AHP1591 recognizes human and murine delta and gamma variants but not the alpha or beta, variants.

FLIP is widely expressed in human tissues and a diverse range of cell lines.

Synonyms:

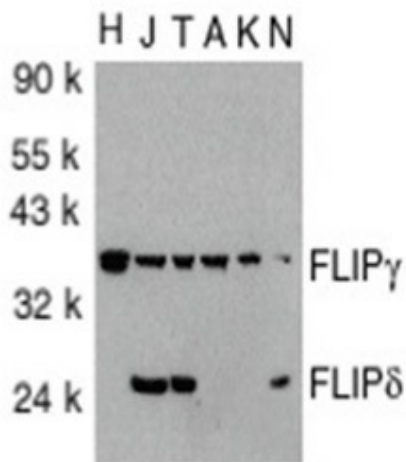
c-FLIP, CLARP, MRIT, CASH, FLAME-1, CASP8AP1, Usurpin

Protein Families:

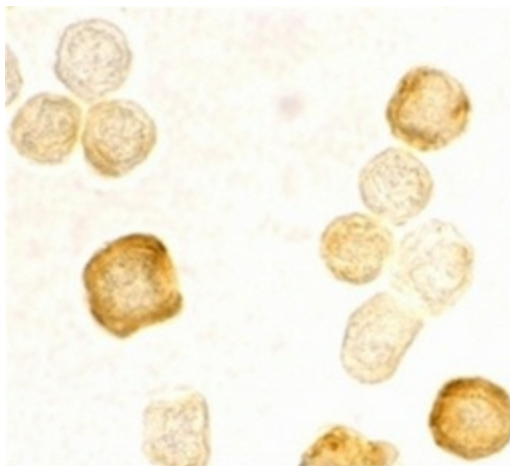
Druggable Genome, Protease

Protein Pathways:

Apoptosis

Product images:


Western blot analysis of total cell lysates from HeLa (H), Jurkat (J), THP-1 (T), A431 (A), K562 (K0) and NIH/3T3 cells probed with Rabbit anti FLIP gamma/delta



Immunocytochemical staining of HeLa cells with Rabbit anti FLIP gamma/ delta (A)