

## Product datasheet for **AP05786PU-N**

### **CX3CR1 (N-term) Rabbit Polyclonal Antibody**

#### **Product data:**

Product Type:	Primary Antibodies
Applications:	IHC, WB
Recommended Dilution:	<b>Western Blot:</b> 0.5-1.0 µg/ml. Detects a band of approximately 50kDa in Human spleen cell lysates. <b>Immunohistochemistry on Paraffin Sections:</b> 2.0 µg/ml. Requires Antigen retrieval using heat treatment prior to staining of paraffin sections. Sodium citrate buffer pH 6.0 is recommended for this purpose. <b>Positive Control:</b> Human Heart Tissue.
Reactivity:	Human, Mouse, Rat
Host:	Rabbit
Isotype:	IgG
Clonality:	Polyclonal
Immunogen:	A peptide corresponding to amino acids 2-21 of Human CX3CR1.
Specificity:	This antibody recognizes an epitope within the N-terminal region (NT) of Human CX3CR1, a 40.4kDa seven trans-membrane protein.
Formulation:	PBS State: Purified State: Liquid purified IgG fraction Preservative: 0.02% Sodium Azide
Concentration:	lot specific
Purification:	Affinity Chromatography
Conjugation:	Unconjugated
Storage:	Store undiluted at 2-8°C for one month or (in aliquots) at -20°C for longer. Avoid repeated freezing and thawing.
Stability:	Shelf life: one year from despatch.
Gene Name:	C-X3-C motif chemokine receptor 1
Database Link:	<a href="#">Entrez Gene 13051 Mouse</a> <a href="#">Entrez Gene 171056 Rat</a> <a href="#">Entrez Gene 1524 Human P49238</a>



[View online »](#)

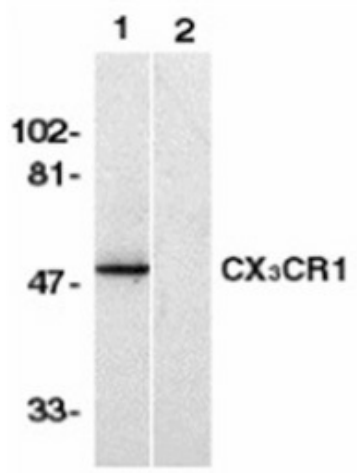
**Background:** CX3CR1, known also as fractalkine receptor, is the receptor for CX3CL1 and acts as a co-receptor with CD4 for the HIV-1 envelope protein. It is expressed in a variety of human tissues and mediates leucocyte adhesion and migration.

**Synonyms:** CX3C chemokine receptor 1, C-X3-C CKR-1, CMKBRL1, CMK-BRL-1

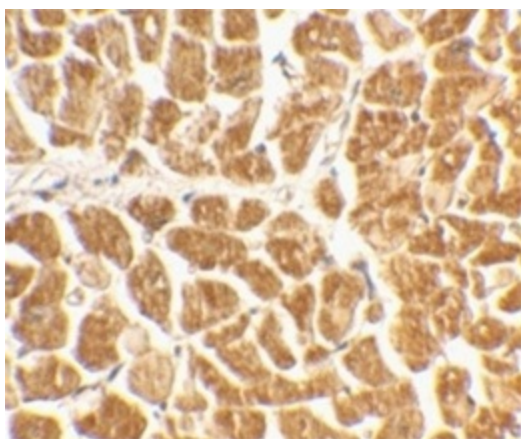
**Protein Families:** Druggable Genome, GPCR, Transmembrane

**Protein Pathways:** Chemokine signaling pathway, Cytokine-cytokine receptor interaction

### Product images:



Western blot analysis of human spleen lysate probed with Rabbit anti Human CX3CR1 Antibody either in the absence (Lane 1) or presence (Lane 2) of blocking peptide



Immunohistochemical staining of human heart tissue with anti Human CX3CR1 Antibody