

Product datasheet for **AP05738PU-N**

ORAI3 (N-term) Rabbit Polyclonal Antibody

Product data:

Product Type:	Primary Antibodies
Applications:	IF, IHC, WB
Recommended Dilution:	Immunohistochemistry on frozen sections: 10 µg/ml. Western blot: 1 - 2 µg/ml; detects a band of approximately 35kDa in A20 cell lysates. Immunocytochemistry.
Reactivity:	Human, Mouse, Rat
Host:	Rabbit
Isotype:	IgG
Clonality:	Polyclonal
Immunogen:	A 15 amino acid peptide from near the amino terminus of human ORAI3.
Specificity:	This antibody recognises human ORAI3, also known as Transmembrane protein 142C (TMEM142C), a 31.5 kDa multi-pass membrane protein belonging to the ORAI family. This antibody is not expected to cross react with either ORAI1 or ORAI2.
Formulation:	Phosphate buffered saline containing 0.02% Sodium Azide (NaN ₃) State: Purified State: Liquid purified IgG
Concentration:	lot specific
Conjugation:	Unconjugated
Storage:	Store at +4°C or at -20°C if preferred. Storage in frost-free freezers is not recommended. This product should be stored undiluted. Avoid repeated freezing and thawing as this may denature the antibody. Should this product contain a precipitate we recommend microcentrifugation before use. 18 months from date of despatch.
Gene Name:	ORAI calcium release-activated calcium modulator 3
Database Link:	Entrez Gene 93129 Human Q9BRQ5



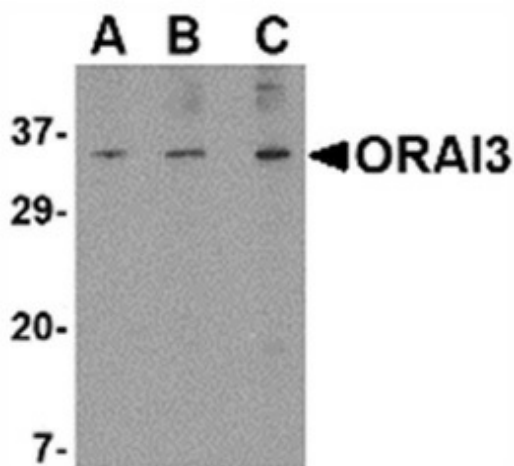
[View online »](#)

Background:

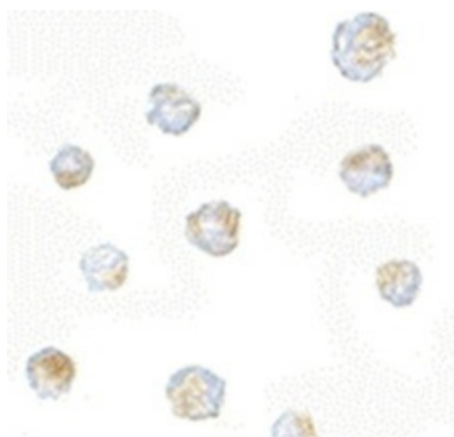
Antigen stimulation of immune cells triggers Ca^{2+} entry through Ca^{2+} release-activated Ca^{2+} (CRAC) channels. CRAC channels are the main pathway for Ca^{2+} influx in T-cells and promote the immune response to pathogens by activating the transcription factor NFAT. ORAI3 is one of two mammalian homologs of ORAI1, a four-transmembrane spanning protein that is an essential component of CRAC channels. ORAI3, along with ORAI1 and ORAI2, functions as a Ca^{2+} plasma membrane channel that is gated through interactions with STIM1, the store-activated endoplasmic reticulum Ca^{2+} sensor. Studies indicate that ORAI3 channels undergo a lesser degree of depotentiation than ORAI1 or ORAI2.

Synonyms:

TMEM142C, ORAI-3

Product images:

Western blot analysis of whole cell lysate from A20 mouse B-cell lymphoma cells probed with Rabbit anti Human ORAI3 at 1 (A), 2 (B) and 4 (C) ug/ml



Immunocytochemical staining of A20 cells with Rabbit anti Human ORAI3