

Product datasheet for **AP05716PU-N**

DISC1 Rabbit Polyclonal Antibody

Product data:

Product Type:	Primary Antibodies
Applications:	IF, WB
Recommended Dilution:	Western blot: 1 - 2 µg/ml; detects bands of approximately 95100kDa in SKNSH cell lysate. Immunocytochemistry.
Reactivity:	Human, Mouse
Host:	Rabbit
Isotype:	IgG
Clonality:	Polyclonal
Immunogen:	An 18 amino acid peptide located near the centre of human DISC1.
Specificity:	This antibody recognises disrupted in schizophrenia 1 (DISC1), 93kD protein located in the nucleus, cytoplasm and mitochondria.
Formulation:	Phosphate buffered saline containing 0.02% Sodium Azide State: Purified State: Liquid purified IgG
Concentration:	lot specific
Purification:	Affinity chromatography
Conjugation:	Unconjugated
Storage:	Store the antibody undiluted at 2-8°C for up to one month or (in aliquots) at -20°C for longer. Avoid repeated freezing and thawing.
Stability:	Shelf life: one year from despatch.
Gene Name:	disrupted in schizophrenia 1
Database Link:	Entrez Gene 27185 Human Q9NRI5



[View online »](#)

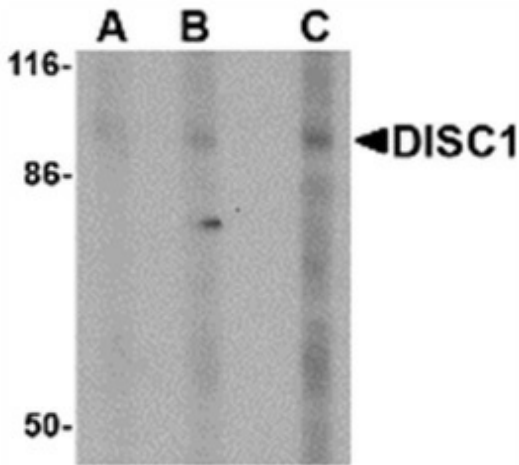
Background:

The DISC1 protein is widely expressed in normal tissues. It is involved in neurite outgrowth and cortical development through its interaction with a variety of proteins including lissencephaly-1 (LIS1), NudeE-like (NUDEL) and phosphodiesterase 4B. In certain cases of schizophrenia the DISC1 gene has been found to be disrupted by a t(1;11) (q42.1;q14.3) translocation, and studies suggest that DISC1 could be a candidate susceptibility gene for this condition.

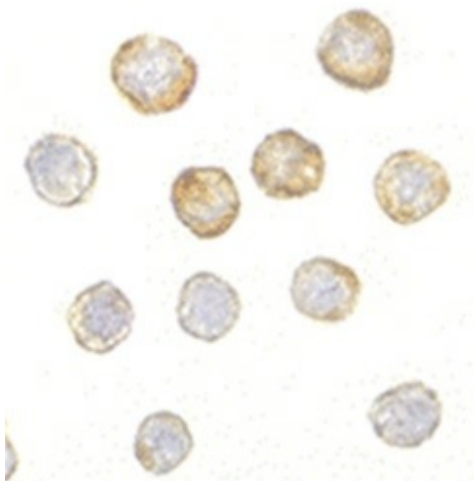
Synonyms:

DISC-1, KIAA0457, Disrupted in schizophrenia 1 protein

Product images:



Western blot analysis of whole cell lysate from SK-N-SH human neuroblastoma cells probed with Rabbit anti Human DISC1 at 0.5 (A), 1 (B) and 2 (C) ug/ml



Immunocytochemical staining of HeLa cells with Rabbit anti Human DISC1