

Product datasheet for **AP05707PU-N**

SLPI Rabbit Polyclonal Antibody

Product data:

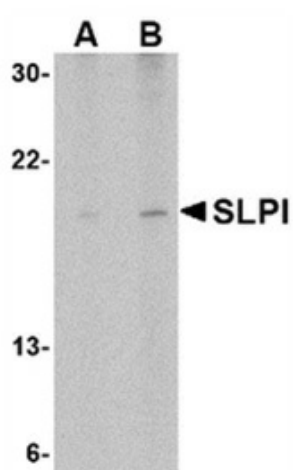
Product Type:	Primary Antibodies
Applications:	IHC, WB
Recommended Dilution:	Western Blot: 1.0 - 2.0 µg/ml; detects a band of approximately 14kDa in Daudi cell lysates. Immunohistochemistry on paraffin sections (requires antigen retrieval using heat treatment prior to staining).
Reactivity:	Human, Mouse
Host:	Rabbit
Isotype:	IgG
Clonality:	Polyclonal
Immunogen:	A 17 amino acid peptide located near the centre of human SLPI.
Specificity:	This antibody recognises secretory leukocyte protease inhibitor (SLPI).
Formulation:	Phosphate buffered saline containing 0.02% Sodium Azide State: Purified State: Liquid purified IgG
Concentration:	lot specific
Conjugation:	Unconjugated
Storage:	Store the antibody undiluted at 2-8°C for one month or (in aliquots) at -20°C for longer. Avoid repeated freezing and thawing.
Stability:	Shelf life: one year from despatch.
Gene Name:	secretory leukocyte peptidase inhibitor
Database Link:	Entrez Gene 6590 Human P03973
Background:	SLPI is a 14kD non-glycosylated protein produced by secretory cells in the respiratory, genital and lacrimal glands, and by macrophages, B-cells and neutrophils. The functions of SLPI are diverse. The SLPI protein inhibits protease activity at sites of inflammation, protecting tissues against protease mediated damage and it possesses anti-microbial/anti-viral activity. In addition, SLPI has been reported to exhibit anti-inflammatory properties, regulating lipopolysaccharide induced activation of NF-kappa beta in peripheral blood monocytes.



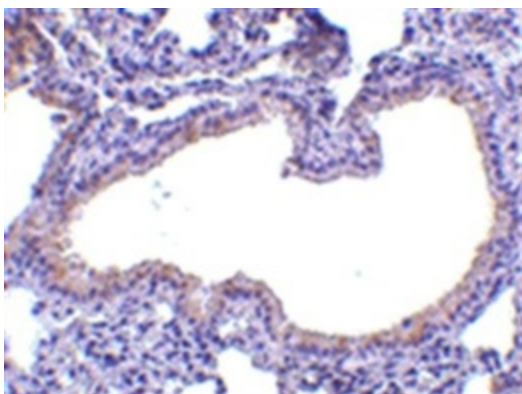
[View online »](#)

Synonyms: SLPI, WAP4, WFDC4

Product images:



Western blot analysis of whole cell lysate from Daudi, Burkitt's lymphoma derived cells probed with Rabbit anti Human SLP1 probed with Rabbit anti Human SLP1 at 1 (A) and 2 (B) ug/ml.



Formalin fixed, paraffin embedded mouse lung stained with Rabbit anti Human SLP1 following heat mediated antigen retrieval using sodium citrate buffer (pH6.0)