

## Product datasheet for **AP05618PU-N**

### IL32 Rabbit Polyclonal Antibody

#### Product data:

Product Type:	Primary Antibodies
Applications:	WB
Recommended Dilution:	Western blot: 5 - 10 µg/ml; detects a band/s of approximately 26kDa in jurkat cell lysate.
Reactivity:	Human, Mouse
Host:	Rabbit
Isotype:	IgG
Clonality:	Polyclonal
Immunogen:	A 16 amino acid peptide located near the centre of human IL-32.
Specificity:	This antibody recognises IL-32.
Formulation:	Phosphate buffered saline containing 0.02% Sodium Azide State: Purified State: Liquid purified IgG
Concentration:	lot specific
Purification:	Affinity chromatography
Conjugation:	Unconjugated
Storage:	Store the antibody undiluted at 2-8°C for up to one month or (in aliquots) at -20°C for longer. Avoid repeated freezing and thawing.
Stability:	Shelf life: one year from despatch.
Gene Name:	interleukin 32
Database Link:	<a href="#">Entrez Gene 9235 Human P24001</a>
Background:	IL-32 is a 26 kDa cytokine, thought to play a role in innate and adaptive immune responses. IL-32 is produced by mitogen-activated lymphocytes, interferon-gamma activated epithelial cells and IL-12, IL-18, IL-32-activated NK cells. It is expressed at elevated levels after the activation of T-cells by mitogens or the activation of NK cells by IL-2. IL-32 activates NF-kappa-B and p38 MAPK cytokine signal pathways. TNF-alpha, IL-1beta, IL-6 and 2 C-X-C chemokine family members, all involved in autoimmune and inflammatory diseases, including rheumatoid arthritis are induced by IL-32.

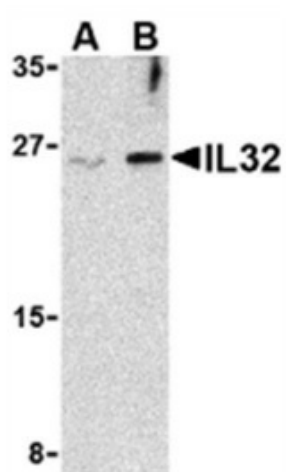


[View online »](#)

Synonyms: IL-32, NK4, TAIF

Protein Families: Secreted Protein

### Product images:



Western blot analysis of whole cell lysate from Jurkat human T cell leukemia cells probed with Rabbit anti Human Interleukin-32 at 2.5 (A) and 5 (B) ug/ml