

Product datasheet for **AP05602PU-N**

TIM 4 (TIMD4) (C-term) Rabbit Polyclonal Antibody

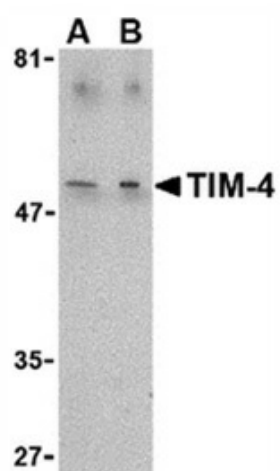
Product data:

Product Type:	Primary Antibodies
Applications:	WB
Recommended Dilution:	Western Blot: 1.0-2.0 µg/ml. Detects a band of approximately 54kDa in Jurkat cell lysate.
Reactivity:	Human, Mouse, Rat
Host:	Rabbit
Isotype:	IgG
Clonality:	Polyclonal
Immunogen:	15 amino acid peptide sequence near the carboxy terminus of human TIM-4.
Specificity:	This antibody detects an epitope within the C-terminal (CT) region of T-cell Immunoglobulin Mucin-4 (TIM-4), also known as SMUCKLER.
Formulation:	PBS containing 0.02% Sodium Azide as preservative State: Purified State: Liquid purified IgG fraction
Concentration:	lot specific
Purification:	Affinity Chromatography
Conjugation:	Unconjugated
Storage:	Store the antibody undiluted at 2-8°C for one month or (in aliquots) at -20°C for longer. Avoid repeated freezing and thawing.
Stability:	Shelf life: one year from despatch.
Gene Name:	T-cell immunoglobulin and mucin domain containing 4
Database Link:	Entrez Gene 91937 Human Q96H15
Background:	TIM-4 is a 42kD type I membrane protein which is preferentially expressed on macrophages and dendritic cells. TIM-4 is the ligand of TIM-1, and binding leads to T-cell proliferation and cytokine production. Polymorphisms in the TIM-4 gene may be associated with a predisposition to asthma.
Synonyms:	TIMD-4, TIM4, TIM-4, T-cell membrane protein 4



[View online »](#)

Product images:



Western blot analysis of whole cell lysate from Jurkat T-cell leukemia cells probed with Rabbit anti Human TIM-4 at 1 (A) and 2 (B) ug/ml.