

Product datasheet for **AP05601PU-N**

TIM 1 (HAVCR1) Rabbit Polyclonal Antibody

Product data:

Product Type:	Primary Antibodies
Applications:	WB
Recommended Dilution:	Western blot: 1.0 - 2.0 µg/ml; detects a band of approximately 49kDa in human uterus tissue lysate.
Reactivity:	Human, Mouse, Rat
Host:	Rabbit
Isotype:	IgG
Clonality:	Polyclonal
Immunogen:	16 amino acid peptide sequence near the centre of human TIM-1.
Specificity:	This antibody detects T cell immunoglobulin mucin-1 (TIM-1), which was first identified as the receptor used by hepatitis A for viral entry (it is also known as the hepatitis A virus cellular receptor- HAVCR).
Formulation:	Phosphate buffered saline containing 0.02% Sodium Azide State: Purified State: Liquid purified IgG
Concentration:	lot specific
Conjugation:	Unconjugated
Storage:	Store the antibody undiluted at 2-8°C for up to one month or (in aliquots) at -20°C for longer. Avoid repeated freezing and thawing.
Stability:	Shelf life: one year from despatch.
Gene Name:	hepatitis A virus cellular receptor 1
Database Link:	Entrez Gene 26762 Human Q96D42



[View online »](#)

Background:

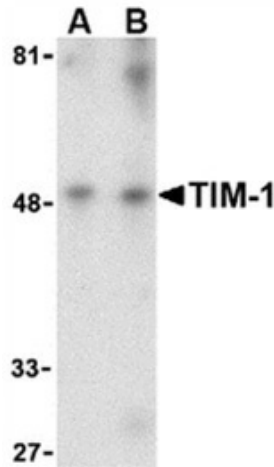
TIM-1 is a key cell surface protein that binds TIM-4, leading to T cell proliferation and T helper type 2 (Th2) cytokine production. TIM-1 has also been shown to bind and activate macrophages.

Two splice variants for human TIM-1 exist; TIM-1a is predominantly expressed in the liver, whilst TIM-1b is expressed in the kidney. Expression of TIM-1 in the kidney is thought to be upregulated in damaged tissue, and is thought to assist healing.

TIM-1 polymorphisms are associated with asthma.

Synonyms:

TIMD-1, TIM1, TIM-1, T cell membrane protein 1, HAVCR-1

Product images:

Western blot analysis of human uterine lysate probed with Rabbit anti Human TIM-1 at 1 (A) and 2 (B) ug/ml.