

## Product datasheet for **AP05600PU-N**

### SLUG (SNAI2) Rabbit Polyclonal Antibody

#### Product data:

Product Type:	Primary Antibodies
Applications:	IF, WB
Recommended Dilution:	<b>Western blot:</b> 0.5-2.0 µg/ml. Detects a band of approximately 30kDa in 293 cell lysate. <b>Immunocytochemistry/Immunofluorescence.</b>
Reactivity:	Human, Mouse
Host:	Rabbit
Isotype:	IgG
Clonality:	Polyclonal
Immunogen:	13 amino acid peptide sequence near the centre of Human Slug
Specificity:	This antibody detects Slug, a member of the Snail family of zinc finger transcription factors, whose expression is induced by FGF, BMP, and TGF-beta. This antibody is not cross-reactive with Snail.
Formulation:	PBS State: Purified State: Liquid purified IgG fraction Preservative: 0.02% Sodium Azide
Concentration:	lot specific
Purification:	Affinity Chromatography
Conjugation:	Unconjugated
Storage:	Store undiluted at 2-8°C for one month or (in aliquots) at -20°C for longer. Avoid repeated freezing and thawing.
Stability:	Shelf life: one year from despatch.
Gene Name:	snail family transcriptional repressor 2
Database Link:	<a href="#">Entrez Gene 20583 Mouse</a> <a href="#">Entrez Gene 6591 Human</a> <a href="#">O43623</a>



[View online »](#)

**Background:**

Slug is a 29kD transcriptional repressor, which functions by binding to E-box motifs and inhibiting gene expression by recruiting histone deacetylase-1 (HDAC-1). Slug controls the expression of a wide variety of genes including *TP53*, *BRCA2*, *PUM* and *CDH1*, and has important roles in apoptosis and epithelial-mesenchymal transition. It is also thought to function in neural crest development. Slug expression in breast, oesophageal, and colorectal carcinomas has been correlated with poor prognosis for survival.

**Synonyms:**

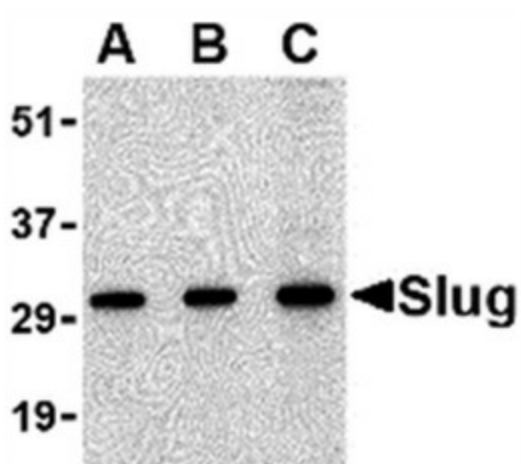
SLUGH

**Protein Families:**

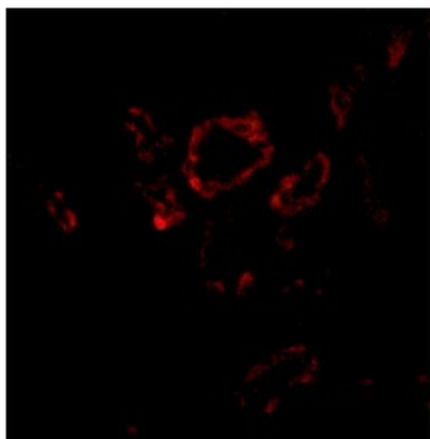
Druggable Genome, Transcription Factors

**Protein Pathways:**

Adherens junction

**Product images:**

Western blot analysis of whole cell lysate from HEK293 human epithelial kidney cells probed with Rabbit anti Human Slug at 0.5 (A), and 1 (B) and 2 (C) ug/ml



Immunofluorescence staining of human kidney with Rabbit anti Human Slug