

Product datasheet for **AP05599PU-N**

Sumo 1 (SUMO1) (N-term) Rabbit Polyclonal Antibody

Product data:

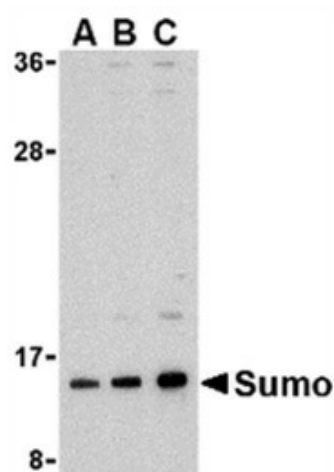
Product Type:	Primary Antibodies
Applications:	IF, WB
Recommended Dilution:	Western blot: 0.5 - 1.0 µg/ml; detects a band of approximately 15kDa in HL60 cell lysates. Immunocytochemistry.
Reactivity:	Human, Mouse, Rat
Host:	Rabbit
Isotype:	IgG
Clonality:	Polyclonal
Immunogen:	14 amino acid peptide sequence near the amino terminus of human SUMO-1
Specificity:	This antibody detects an epitope within the N-terminal (NT) region of small ubiquitin-related modifier-1 (SUMO-1).
Formulation:	Phosphate buffered saline containing 0.02% Sodium Azide State: Purified State: Liquid purified IgG
Concentration:	lot specific
Conjugation:	Unconjugated
Storage:	Store the antibody undiluted at 2-8°C for one month or (in aliquots) at -20°C for longer. Avoid repeated freezing and thawing.
Stability:	Shelf life: one year from despatch.
Gene Name:	small ubiquitin-like modifier 1
Database Link:	Entrez Gene 7341 Human P63165
Background:	SUMO-1 is an 11kD protein which structurally related to ubiquitin, and is added to proteins as a form of post-translational modification known as sumoylation. Sumoylation can be cell cycle regulated, stimulated upon stress or induced by DNA damage, and binding elicits individual effects for each protein. Effects include changes to protein stability, nuclear-cytosolic transport, and transcriptional regulation (mostly transcriptional repression). Alternate transcriptional splice variants encoding different isoforms have been characterized.



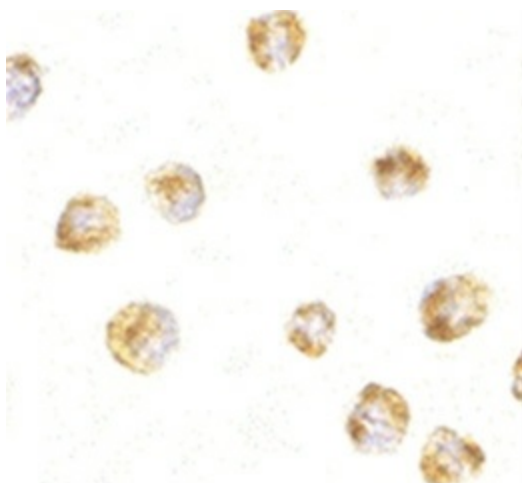
[View online »](#)

Synonyms: SMT3C, SMT3H3, UBL1, GMP1, SMT3 homolog 3, Sentrin

Product images:



Western blot analysis of whole cell lysate from HL-60 human promyelocytic leukemia cells probed with Rabbit anti Human SUMO-1



Immunocytochemical staining of HL-60 cells with Rabbit anti Human SUMO-1