

Product datasheet for **AP05596PU-N**

TLR1 (N-term) Rabbit Polyclonal Antibody

Product data:

Product Type:	Primary Antibodies
Applications:	IHC, WB
Recommended Dilution:	Western blot: 1-4 µg/ml. Detects a band of approximately 90kDa in mouse spleen lysates. Immunohistochemistry on Frozen Sections: 10 µg/ml.
Reactivity:	Human, Mouse
Host:	Rabbit
Isotype:	IgG
Clonality:	Polyclonal
Immunogen:	A 16 amino acid peptide located near the amino terminus of Human CD281
Specificity:	This antibody detects an epitope within the N-terminal (NT) region of CD281, also known as toll like receptor 1 (TLR1).
Formulation:	PBS State: Purified State: Liquid purified IgG fraction Preservative: 0.02% Sodium Azide
Concentration:	lot specific
Purification:	Affinity Chromatography
Conjugation:	Unconjugated
Storage:	Store undiluted at 2-8°C for up to one month or (in aliquots) at -20°C for longer. Avoid repeated freezing and thawing.
Stability:	Shelf life: one year from despatch.
Gene Name:	toll like receptor 1
Database Link:	Entrez Gene 7096 Human Q15399



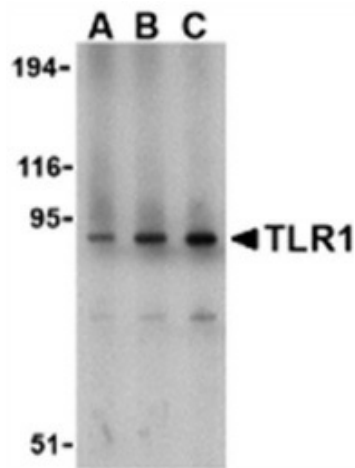
[View online »](#)

Background:

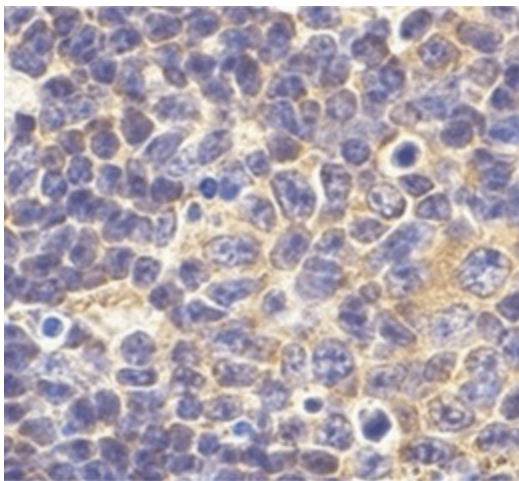
TLRs recognize pathogen associated molecular patterns (PAMPs) that are expressed on infectious agents, and serve as an important link between the innate and adaptive immune response through the production of cytokines. TLR1 is co-expressed with TLR2 on monocytes and dendritic cells where they form heterodimers that can recognize peptidoglycan and bacterial lipopeptides, and in particular triacylated lipoproteins. TLR1 can also regulate other TLR responses; TLR1 can associate with TLR4 and inhibit its signalling in endothelial cells, and can associate with TLR2 to inhibit the TLR2/TLR6 mediated response to phenol-soluble modulins.

Synonyms:

Toll-like receptor 1, TIL, KIAA0012

Product images:

Western blot analysis of mouse spleen lysate probed with Rabbit anti Human CD281 at 1 (A), 2 (B) and 4 (C) ug/ml



Immunohistochemical staining of mouse spleen with Rabbit anti Human CD281