

## Product datasheet for **AP05595PU-S**

### IRF7 (C-term) Rabbit Polyclonal Antibody

#### Product data:

Product Type:	Primary Antibodies
Applications:	IHC, WB
Recommended Dilution:	Western blot: 1.0-2.0 µg/ml. This antibody detects a band of approximately 51kDa in 293 whole cell lysate.
Reactivity:	Human, Mouse, Rat
Host:	Rabbit
Isotype:	IgG
Clonality:	Polyclonal
Immunogen:	14 amino acid peptide sequence near the carboxy terminus of Human IRF7.
Specificity:	This antibody detects an epitope within the C-terminal of Human Interferon Regulatory Factor 7 (IRF7).
Formulation:	PBS containing 0.02% Sodium Azide as preservative. State: Aff - Purified State: Liquid purified IgG fraction.
Concentration:	lot specific
Purification:	Affinity Chromatography.
Conjugation:	Unconjugated
Storage:	Store the antibody undiluted at 2-8°C for one month or (in aliquots) at -20°C for longer. Avoid repeated freezing and thawing.
Stability:	Shelf life: one year from despatch.
Gene Name:	interferon regulatory factor 7
Database Link:	<a href="#">Entrez Gene 3665 Human Q92985</a>



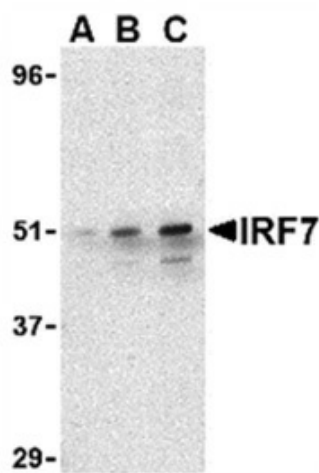
[View online »](#)

**Background:**

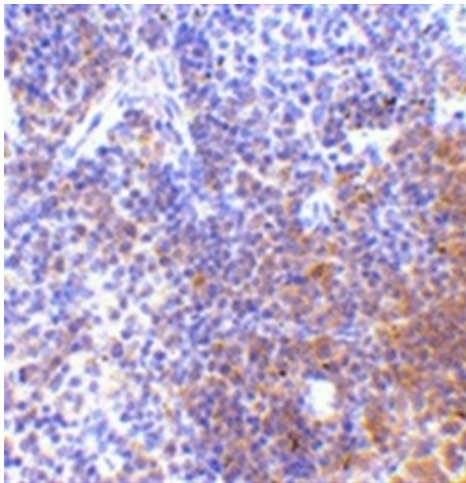
IRF7 is a 54kD transcriptional activator of type I interferons (IFN $\alpha$ /beta) in response to local and systemic viral infection. IRF7 is mostly expressed by plasmacytoid dendritic cells (pDC), which differentiate in response to IFNs and virus infection. This then stabilizes the IRF7 protein, in turn leading to increased IFN production. Multiple IRF7 transcript variants have been identified, although their individual functions have not yet been established.

**Synonyms:**

IRF-7

**Product images:**


Western blot analysis of whole cell lysates from HEK293 human kidney epithelial cells probed with Rabbit anti Human IRF7 at 0.5 (A), 1 (B) and 2 (C)  $\mu$ g/ml



Immunohistochemical staining of mouse spleen with Rabbit anti Human IRF7