

## Product datasheet for **AP05594PU-N**

### IRF7 Rabbit Polyclonal Antibody

#### Product data:

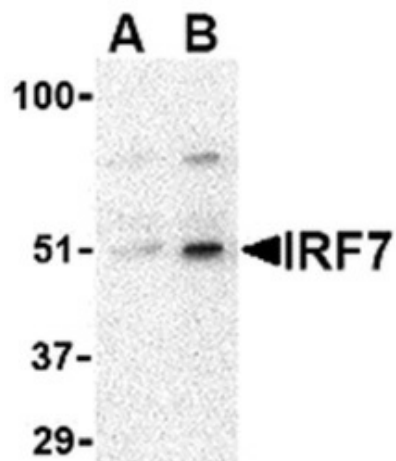
Product Type:	Primary Antibodies
Applications:	IHC, WB
Recommended Dilution:	<b>Western Blot:</b> 0.5-1.0 µg/ml. Detects a band of approximately 51kDa in 293 whole cell lysate.
Reactivity:	Human
Host:	Rabbit
Isotype:	IgG
Clonality:	Polyclonal
Immunogen:	14 amino acid peptide sequence near the center of Human IRF7.
Specificity:	This antibody detects Human Interferon Regulatory Factor 7 (IRF7). Other species not tested.
Formulation:	PBS State: Purified State: Liquid purified IgG fraction Preservative: 0.02% Sodium Azide
Concentration:	lot specific
Purification:	Affinity Chromatography
Conjugation:	Unconjugated
Storage:	Store undiluted at 2-8°C for one month or (in aliquots) at -20°C for longer. Avoid repeated freezing and thawing.
Stability:	Shelf life: one year from despatch.
Gene Name:	interferon regulatory factor 7
Database Link:	<a href="#">Entrez Gene 3665 Human Q92985</a>
Background:	IRF7 is a 54kD transcriptional activator of type I interferons (IFNalpha/beta) in response to local and systemic viral infection. IRF7 is mostly expressed by plasmacytoid dendritic cells (pDC), which differentiate in response to IFNs and virus infection. This then stabilizes the IRF7 protein, in turn leading to increased IFN production. Multiple IRF7 transcript variants have been identified, although their individual functions have not yet been established.



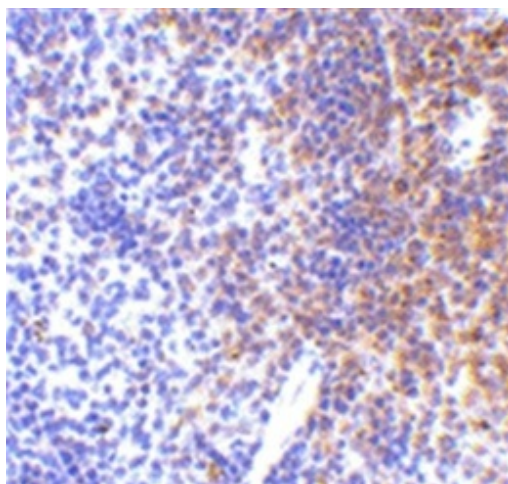
[View online »](#)

Synonyms: IRF-7

**Product images:**



Western blot analysis of whole cell lysate from HEK293 human kidney epithelial cell line probed with Rabbit anti Human IRF7 antibody at 0.5 (A) and 1 (B) ug/ml.



Immunohistochemical staining of Mouse spleen with Rabbit anti Human IRF7 antibody