

Product datasheet for **AP05589PU-N**

IL23 (IL23A) (N-term) Rabbit Polyclonal Antibody

Product data:

Product Type:	Primary Antibodies
Applications:	IHC, WB
Recommended Dilution:	Western blot: 1 - 2 µg/ml; detects a band of approximately 24 kDa in mouse pancreas tissue lysate.
Reactivity:	Human, Mouse
Host:	Rabbit
Isotype:	IgG
Clonality:	Polyclonal
Immunogen:	A 16 amino acid peptide from near the amino terminus of human IL-23.
Specificity:	This antibody detects an epitope within the N-terminal (NT) domain of human interleukin-23 (IL-23).
Formulation:	Phosphate buffered saline containing 0.02% Sodium Azide (NaN ₃) State: Purified State: Liquid purified IgG
Concentration:	lot specific
Conjugation:	Unconjugated
Storage:	Store the antibody undiluted at 2-8°C for up to one month or (in aliquots) at -20°C for longer. Avoid repeated freezing and thawing.
Stability:	Shelf life: one year from despatch.
Gene Name:	interleukin 23 subunit alpha
Database Link:	Entrez Gene 83430 Mouse Entrez Gene 51561 Human Q9NPF7



[View online »](#)

Background:

IL23 is a 21kD heterodimeric cytokine structurally related to IL-12. IL-23 is composed of a p19 subunit encoded by the IL23A gene, and a p40 subunit of interleukin-12 (IL12B). IL-23 is expressed mainly by activated macrophages and dendritic cells, and plays an important role in bridging innate and adaptive responses. IL-23 activates a subset of T cells called Th17 cells, which are characterised by the production of interleukin-17. The IL-23/IL-17 pathway is essential for the induction and maintenance of brain and joint inflammatory autoimmune diseases, including Guillain Barre Syndrome, Multiple sclerosis and rheumatoid arthritis.

Synonyms:

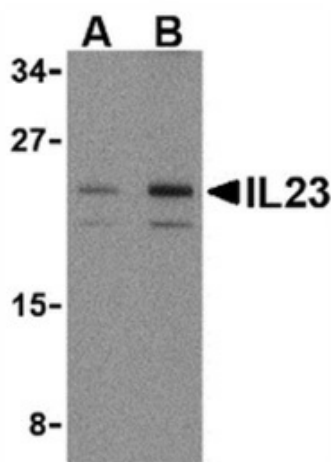
IL-23 subunit alpha, SGRF, Interleukin-23 subunit p19, IL-23p19

Protein Families:

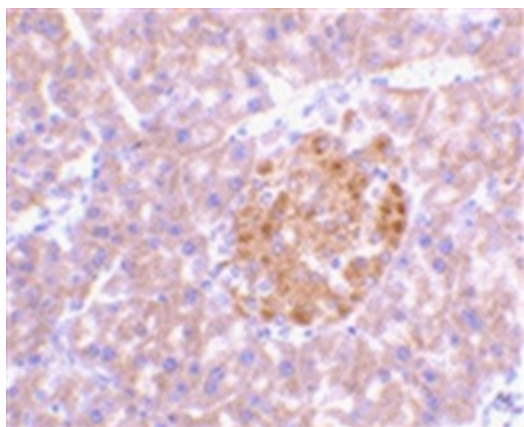
Druggable Genome, Secreted Protein

Protein Pathways:

Cytokine-cytokine receptor interaction, Jak-STAT signaling pathway

Product images:


Western blot analysis of mouse pancreas lysate probed with Rabbit anti Human interleukin-23 at 1 (A) and 2 (B) ug/ml.



Immunohistochemical staining of mouse pancreas With Rabbit anti Human interleukin-23