

Product datasheet for **AP05588PU-N**

IL23 (IL23A) (C-term) Rabbit Polyclonal Antibody

Product data:

Product Type:	Primary Antibodies
Applications:	IF, IHC, WB
Recommended Dilution:	Western blot: 1-2 µg/ml. Detects a band of approximately 24kDa in Raji cell lysates. Immunocytochemistry. Immunohistochemistry on Frozen Sections: 10 µg/ml. <i>Positive control tissue:</i> Raji cells.
Reactivity:	Human, Mouse
Host:	Rabbit
Isotype:	IgG
Clonality:	Polyclonal
Immunogen:	A 14 amino acid peptide from near the carboxy-terminus of human IL-23
Specificity:	This antibody detects an epitope within the C-terminal (CT) domain of Human Interleukin-23 (IL-23).
Formulation:	Phosphate buffered saline (PBS) State: Purified State: Liquid purified IgG fraction Preservative: 0.02% Sodium Azide
Concentration:	lot specific
Purification:	Affinity chromatography
Conjugation:	Unconjugated
Storage:	Store undiluted at 2-8°C for one month or (in aliquots) at -20°C for longer. Avoid repeated freezing and thawing.
Stability:	Shelf life: one year from despatch.
Gene Name:	interleukin 23 subunit alpha
Database Link:	Entrez Gene 83430 Mouse Entrez Gene 51561 Human Q9NPF7



[View online »](#)

Background:

IL23 is a 21kD heterodimeric cytokine structurally related to IL-12. IL-23 is composed of a p19 subunit encoded by the IL23A gene, and a p40 subunit of interleukin-12 (IL12B). IL-23 is expressed mainly by activated macrophages and dendritic cells, and plays an important role in bridging innate and adaptive responses.

IL-23 activates a subset of T cells called Th17 cells, which are characterised by the production of interleukin-17. The IL-23/IL-17 pathway is essential for the induction and maintenance of brain and joint inflammatory autoimmune diseases, including Guillain Barre Syndrome, Multiple sclerosis and rheumatoid arthritis.

Synonyms:

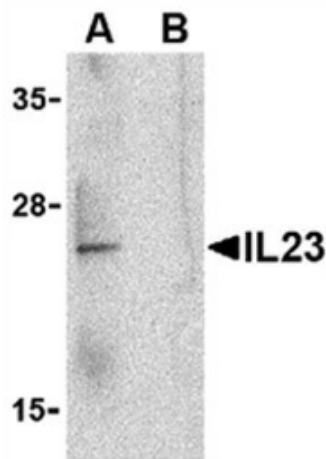
IL-23 subunit alpha, SGRF, Interleukin-23 subunit p19, IL-23p19

Protein Families:

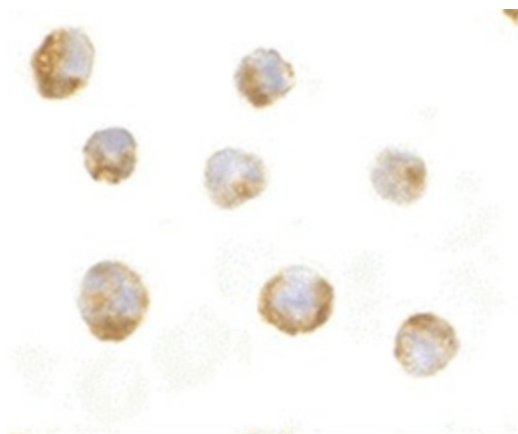
Druggable Genome, Secreted Protein

Protein Pathways:

Cytokine-cytokine receptor interaction, Jak-STAT signaling pathway

Product images:


Western blot analysis of whole cell lysate from Raji, human Burkitt's lymphoma derived cells probed with Rabbit anti Human Interleukin-23 in the absence (A) or presence (B) of blocking peptide



Immunocytochemical staining of Raji cells with Rabbit anti Human interleukin-23