

Product datasheet for **AP05510PU-N**

Prostate Specific Antigen (KLK3) Sheep Polyclonal Antibody

Product data:

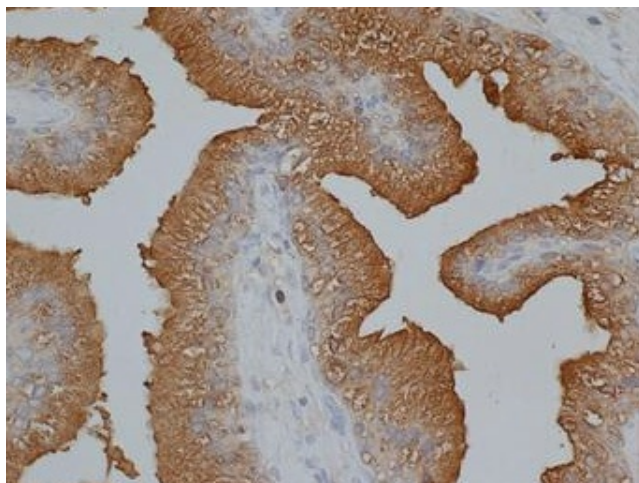
Product Type:	Primary Antibodies
Applications:	ELISA, IHC
Recommended Dilution:	ELISA. Immunohistochemistry on Paraffin Sections: 1/1000. This antibody requires antigen retrieval using heat treatment prior to staining of paraffin sections. Sodium citrate buffer pH 6.0 is recommended for this purpose.
Reactivity:	Human
Host:	Sheep
Isotype:	IgG
Clonality:	Polyclonal
Immunogen:	Purified human prostate specific antigen from Human seminal fluid.
Specificity:	This antibody is specific for Human Prostate Specific Antigen, a 33-34 kD glycoprotein with chymotrypsin-like protease activity. This antibody shows minimal cross reactivity in gel diffusion with serum proteins: albumin, retinol binding protein, IgG and alpha-1-microglobulin.
Formulation:	PBS State: Purified State: Liquid purified IgG fraction Preservative: 0.09% Sodium Azide
Concentration:	lot specific
Purification:	Affinity Chromatography on Protein G
Conjugation:	Unconjugated
Storage:	Store undiluted at 2-8°C for one month or (in aliquots) at -20°C for longer. Avoid repeated freezing and thawing.
Stability:	Shelf life: one year from despatch.
Gene Name:	kallikrein related peptidase 3
Database Link:	Entrez Gene 354 Human P07288



[View online »](#)

Synonyms: Prostate-specific antigen, Semenogelase, Gamma-seminoprotein, P-30 antigen

Product images:



Human Prostate stained with sheep anti Human PSA antibody