

Product datasheet for **AP05441SU-L**

Hemoglobin Sheep Polyclonal Antibody

Product data:

Product Type:	Primary Antibodies
Applications:	ELISA, WB
Recommended Dilution:	ELISA. Western Blot: 1/100-1/1000.
Reactivity:	Bovine, Human
Host:	Sheep
Isotype:	IgG
Clonality:	Polyclonal
Immunogen:	Native Hemoglobin from Erythrocytes
Specificity:	This antibody is specific for Human Hemoglobin. It shows weak (< 10%) cross-reactivity with Bovine Hemoglobin.
Formulation:	PBS containing 0.09% Sodium Azide as preservative State: Purified State: Liquid purified IgG fraction
Concentration:	lot specific
Purification:	Affinity Chromatography on Protein G
Conjugation:	Unconjugated
Storage:	Store undiluted at 2-8°C for one month or (in aliquots) at -20°C for longer. Avoid repeated freezing and thawing.
Stability:	Shelf life: one year from despatch.



[View online »](#)

Background:

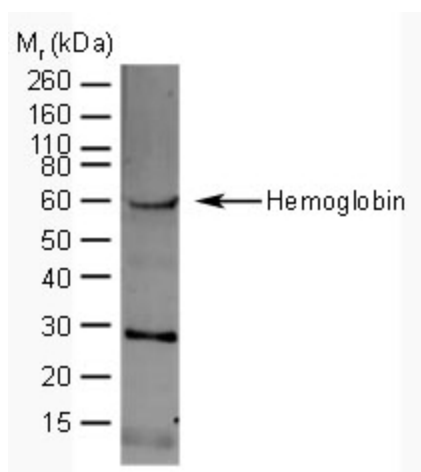
Hemoglobin is a 66kDa metalloprotein composed of four globular subunits each of which is associated with an iron-containing heme group. The heme group is involved with oxygen transport from the lungs to the tissues and the globin molecule plays a major role in transporting carbon dioxide in the reverse direction. Hemoglobin is found in the erythrocytes of all vertebrates. There is a wide diversity of amino acid sequences and substitutions within mammalian hemoglobins, however the molecular weight is generally around 66kDa with an iron content of about 0.34%. The level of hemoglobin in the blood is used in the diagnosis of anemia; levels in the feces are indicative of various clinical conditions.

Mutations in the genes for the hemoglobin protein result in a group of hereditary diseases in humans termed hemoglobinopathies, and include sickle-cell disease and thalassemias.

Synonyms:

Haemoglobin

Product images:



Human Hemoglobin detected in a red blood cell lysate using Sheep anti Human Hemoglobin antibody (AP05441SU-L). Other bands detected represent different subunits of hemoglobin.