

## Product datasheet for **AP05357SU-N**

### OVAL Rabbit Polyclonal Antibody

#### Product data:

Product Type:	Primary Antibodies
Applications:	ELISA, WB
Recommended Dilution:	<b>ELISA.</b> <b>Western Blot:</b> 1/4,000.
Reactivity:	Chicken
Host:	Rabbit
Isotype:	IgG
Clonality:	Polyclonal
Immunogen:	Highly purified Albumin from Chicken Egg
Specificity:	This antibody is specific for Chicken Ovalbumin, the predominant protein found in Egg White. Does not react with Bovine.
Formulation:	State: Serum State: Liquid Serum containing 0.09% Sodium Azide as preservative
Conjugation:	Unconjugated
Storage:	Store the antibody undiluted at 2-8°C for one month or (in aliquots) at -20°C for longer. Avoid repeated freezing and thawing.
Stability:	Shelf life: one year from despatch.
Gene Name:	ovalbumin (SERPINB14)
Database Link:	<a href="#">Entrez Gene 396058 Chicken P01012</a>



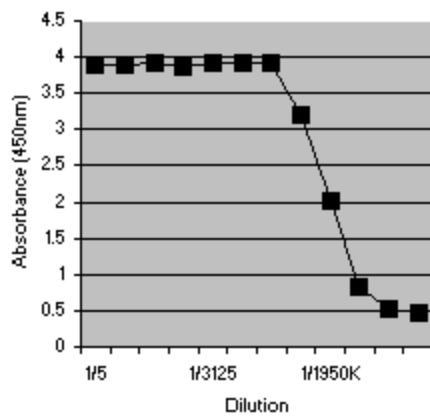
[View online »](#)

**Background:**

Chicken Ovalbumin is the major protein in the "white" of the egg (and a favorite antigen in immunological research). Egg white contains a variety of proteins including ovalbumin, conalbumin, ovomucoid and lysozyme. It belongs to the serpin family and the Ov serpin subfamily. Ovalbumin can cause an allergic reaction in humans. Ovalbumin has been implicated in the development of the egg shell. Immunohistochemistry revealed that ovalbumin is found only in the mammillary bodies of decalcified shell, and is not distributed throughout the shell matrix. These results indicate that ovalbumin is present during the initial phase of shell formation and becomes incorporated into the protein matrix of the mammillary bodies. However, it is not yet clear whether ovalbumin at this site plays a specific role in shell mineralisation.

**Synonyms:**

SERPINB14, Egg albumin, Plakalbumin, Allergen Gal d II

**Product images:**


Ovalbumin detected with Rabbit anti Chicken Ovalbumin antibody