

Product datasheet for **AP05308PU-N**

DEGS1 Rabbit Polyclonal Antibody

Product data:

Product Type:	Primary Antibodies
Applications:	IHC, WB
Recommended Dilution:	Western Blot (1/400 starting dilution). Immunohistochemistry (10-15 µg/ml). <i>Positive Control:</i> Placenta, normal Human brain.
Reactivity:	Human, Mouse, Rat
Host:	Rabbit
Isotype:	IgG
Clonality:	Polyclonal
Immunogen:	Synthetic peptide derived from the Human DEGS1 protein
Specificity:	This antibody detects Degenerative Spermatocyte Homolog 1.
Formulation:	PBS State: Aff - Purified State: Liquid purified Ig fraction Preservative: 0.08% Sodium Azide
Concentration:	lot specific
Purification:	Antigen Immunoaffinity Chromatography
Conjugation:	Unconjugated
Storage:	Upon receipt, store undiluted (in aliquots) at -20°C. Avoid repeated freezing and thawing.
Stability:	Shelf life: one year from despatch.
Gene Name:	delta(4)-desaturase, sphingolipid 1
Database Link:	<u>Entrez Gene 13244 Mouse</u> <u>Entrez Gene 58970 Rat</u> <u>Entrez Gene 8560 Human</u> <u>O15121</u>



[View online »](#)

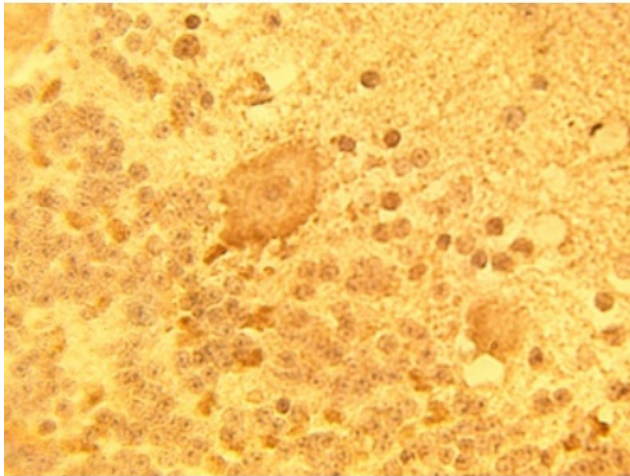
Background: The product of the DEGS1 gene is a member of the membrane fatty acid (sphingolipid delta 4) desaturase family. Reported to function by inserting double bonds at delta 4 position in fatty acids. DEGS1 is an intracellular enzyme. Overexpression of this gene inhibited biosynthesis of the EGF receptor, suggesting a possible role of a fatty acid desaturase in regulating biosynthetic processing of the EGF receptor. Two splice variants have been identified.

Synonyms: DES1, MLD, MIG15, Degenerative spermatocyte homolog 1, Membrane lipid desaturase

Protein Families: Druggable Genome, Transmembrane

Protein Pathways: Metabolic pathways, Sphingolipid metabolism

Product images:



Immunohistochemical staining of normal human brain tissue using DEGS1 Antibody at 15 ug/ml.