

## Product datasheet for **AP05303PU-N**

### GLI1 Rabbit Polyclonal Antibody

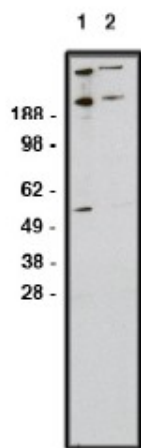
#### Product data:

Product Type:	Primary Antibodies
Applications:	WB
Recommended Dilution:	Western blot (1:400 starting dilution).
Reactivity:	Human
Host:	Rabbit
Clonality:	Polyclonal
Immunogen:	Synthetic peptide derived from human zinc finger protein GLI1
Specificity:	This antibody detects Zinc Finger Protein GLI1, found in testis, myometrium and fallopian tube.
Formulation:	Phosphate buffered saline with 0.08% sodium azide State: Aff - Purified State: Liquid Ig fraction
Concentration:	lot specific
Purification:	Affinity chromatography
Conjugation:	Unconjugated
Storage:	Store the product (in aliquots) at -20 °C. Can be shipped at 2 - 8 °C. Avoid repeated freezing and thawing.
Stability:	Shelf life: One year from despatch.
Database Link:	<a href="#">Entrez Gene 2735 Human P08151</a>
Background:	Zinc Finger Protein GLI1 is a member of the Kruppel family of zinc finger proteins. It is thought that it may regulate the transcription of specific genes during normal development and may play a role in craniofacial development and digital development. It also may be involved in the development of the central nervous system and gastrointestinal tract. This protein mediates SHH signaling and thus cell proliferation and differentiation. It has been localized to the cytoplasm and nucleus. It is tethered in the cytoplasm by binding to SUFU and activation and translocation to the nucleus is promoted by interaction with STK36. Protein expression is amplified in glioblastoma cells. Defects in the GLI1 protein may be a cause of breast cancer.

[View online »](#)

Synonyms: GLI-1, GLI

### Product images:



Western blot using GLI1 antibody on RMS-13 cell lysate. Lysate used at 15 ug/lane. Antibody used at 1:200 (lane 1) and 1:400 (lane 2) dilution. Secondary antibody, mouse anti-rabbit HRP, used at 1:75k dilution.