

Product datasheet for **AP05301SU-N**

NSMase2 (SMPD3) Rabbit Polyclonal Antibody

Product data:

Product Type:	Primary Antibodies
Applications:	WB
Recommended Dilution:	Western blot (1-5 µg/ml).
Reactivity:	Human
Host:	Rabbit
Clonality:	Polyclonal
Immunogen:	Synthetic peptide derived from human sphingomyelin phosphodiesterase 3
Specificity:	This antibody detects Sphingomyelin Phosphodiesterase 3.
Formulation:	Phosphate buffered saline with 0.08% sodium azide State: Purified State: Liquid purified Ig fraction
Concentration:	lot specific
Conjugation:	Unconjugated
Storage:	Store the product (in aliquots) at -20 °C. Can be shipped at 2 - 8 °C. Avoid repeated freezing and thawing.
Stability:	Shelf life: One year from despatch.
Gene Name:	sphingomyelin phosphodiesterase 3
Database Link:	Entrez Gene 55512 Human Q9NY59
Background:	Sphingomyelin phosphodiesterase 3 catalyzes the hydrolysis of sphingomyelin to form ceramide and phosphocholine. Ceramide mediates numerous cellular functions, such as apoptosis and growth arrest, and is capable of regulating these two cellular events independently. It also hydrolyzes sphingosylphosphocholine. Sphingomyelin phosphodiesterase 3 regulates the cell cycle by acting as a growth suppressor in confluent cells. It likely acts as a regulator of postnatal development and participates in bone and dentin mineralization. It is activated by unsaturated fatty acids and phosphatidylserine. It is predominantly expressed in the brain.



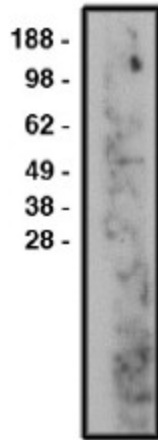
[View online »](#)

Synonyms: Sphingomyelin phosphodiesterase 3, Neutral sphingomyelinase II, Neutral sphingomyelinase 2

Protein Families: Transmembrane

Protein Pathways: Metabolic pathways, Sphingolipid metabolism

Product images:



Western blot using nSMase2 antibody on human brain lysate. Lysate used at 14 ug/lane. Antibody used at 10 ug/ml. Secondary antibody, mouse anti-rabbit HRP, used at 1:50k dilution.