

Product datasheet for **AP05298SU-N**

NUMB Rabbit Polyclonal Antibody

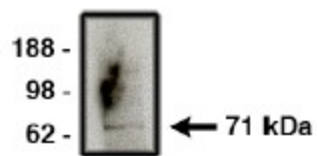
Product data:

Product Type:	Primary Antibodies
Applications:	WB
Recommended Dilution:	Western blot (1-5 µg/ml).
Reactivity:	Human
Host:	Rabbit
Clonality:	Polyclonal
Immunogen:	Synthetic peptide derived from human Numb protein
Specificity:	This antibody detects NUMB.
Formulation:	Phosphate buffered saline with 0.08% sodium azide State: Purified State: Liquid purified Ig fraction
Concentration:	lot specific
Conjugation:	Unconjugated
Storage:	Store the product (in aliquots) at -20 °C. Can be shipped at 2 - 8 °C. Avoid repeated freezing and thawing.
Stability:	Shelf life: One year from despatch.
Gene Name:	NUMB, endocytic adaptor protein
Database Link:	Entrez Gene 8650 Human P49757
Background:	Implicated in the control of cell fate decisions during development. Interacts with EPS15, LNX and NOTCH1. May interact with DUOXA1. Interacts with RALBP1 in a complex also containing EPN1 and TFAP2A during interphase and mitosis.
Synonyms:	Protein S171, h-Numb



[View online »](#)

Product images:



Western blot using anti-NUMB on human brain lysate. Lysate used at 14 ug/lane. Antibody used at 10 ug/ml. Secondary antibody, mouse anti-rabbit HRP, used at 1:50k dilution.