

Product datasheet for **AP05298PU-N**

NUMB Rabbit Polyclonal Antibody

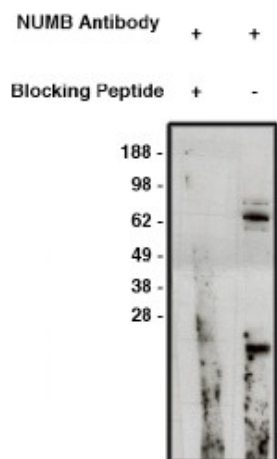
Product data:

Product Type:	Primary Antibodies
Applications:	WB
Recommended Dilution:	Western Blot (1/400 starting dilution). Immunohistochemistry (10-15 µg/ml). Positive Control: Protein found in brain, liver, testis and epithelium.
Reactivity:	Human
Host:	Rabbit
Clonality:	Polyclonal
Immunogen:	Synthetic peptide derived from human Numb protein
Specificity:	This antibody detects NUMB. Protein found in brain, liver, testis and epithelium
Formulation:	PBS State: Aff - Purified State: Liquid purified IgG fraction Preservative: 0.08% Sodium Azide
Concentration:	lot specific
Purification:	Antigen Immunoaffinity Chromatography
Conjugation:	Unconjugated
Storage:	Store the product (in aliquots) at -20 °C. Can be shipped at 2 - 8 °C. Avoid repeated freezing and thawing.
Stability:	Shelf life: One year from despatch.
Gene Name:	NUMB, endocytic adaptor protein
Database Link:	Entrez Gene 8650 Human P49757
Background:	Implicated in the control of cell fate decisions during development. Interacts with EPS15, LNX and NOTCH1. May interact with DUOXA1. Interacts with RALBP1 in a complex also containing EPN1 and TFAP2A during interphase and mitosis.
Synonyms:	Protein S171, h-Numb



[View online »](#)

Product images:



Western blot using anti-NUMB antibody (AP05298PU-N) on human brain lysate (14 ug/lane). Antibody was used with (lane 1) and without (lane 2) blocking peptide at 10 ug/ml.