

Product datasheet for **AP05295PU-N**

SLC9A6 Rabbit Polyclonal Antibody

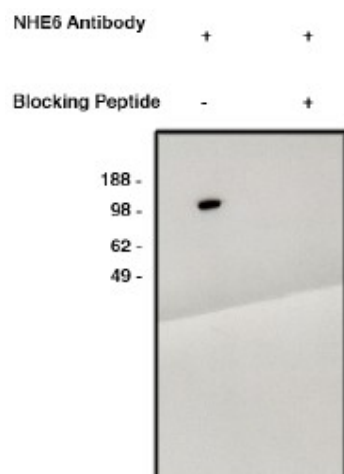
Product data:

Product Type:	Primary Antibodies
Applications:	WB
Recommended Dilution:	Western blot (1:400 starting dilution).
Reactivity:	Human
Host:	Rabbit
Clonality:	Polyclonal
Immunogen:	Synthetic peptide derived from human NHE6 protein
Specificity:	This antibody detects Sodium-Hydrogen Exchanger 6 (NHE6), most abundant in mitochondrion-rich tissues such as brain, skeletal muscle and heart.
Formulation:	Phosphate buffered saline with 0.08% sodium azide State: Aff - Purified State: Liquid Ig fraction
Concentration:	lot specific
Purification:	Affinity chromatography
Conjugation:	Unconjugated
Storage:	Store the product (in aliquots) at -20 °C. Can be shipped at 2 - 8 °C. Avoid repeated freezing and thawing.
Stability:	Shelf life: One year from despatch.
Gene Name:	solute carrier family 9 member A6
Database Link:	Entrez Gene 10479 Human Q92581
Background:	Electroneutral exchange of protons for Na(+) and K(+) across the mitochondrial inner membrane. Contributes to organellar volume and calcium homeostasis.
Synonyms:	NHE-6, Sodium/hydrogen exchanger 6, KIAA0267
Protein Families:	Druggable Genome, Transmembrane
Protein Pathways:	Cardiac muscle contraction



[View online »](#)

Product images:



Western blot using NHE6 antibody on human brain lysate. Antibody function blocked using specific blocking peptide (right lane only). Second step mouse anti-rabbit HRP used at 1:75K dilution.