

Product datasheet for **AP05294SU-N**

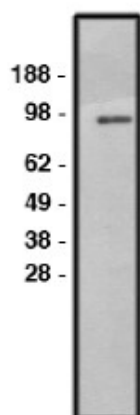
SLC9A1 Rabbit Polyclonal Antibody

Product data:

Product Type:	Primary Antibodies
Applications:	WB
Recommended Dilution:	Western blot (1-5 µg).
Reactivity:	Human
Host:	Rabbit
Clonality:	Polyclonal
Immunogen:	Synthetic peptide derived from the human NHE-1 protein
Specificity:	This antibody detects Sodium-Hydrogen Exchanger 1 (NHE1), expressed in kidney and intestine.
Formulation:	Phosphate buffered saline with 0.08% sodium azide State: Purified State: Liquid purified Ig fraction
Concentration:	lot specific
Conjugation:	Unconjugated
Storage:	Store the antibody (in aliquots) at -20°C. Can be shipped at 2-8°C. Avoid repeated freezing and thawing.
Stability:	Shelf life: One year from despatch.
Gene Name:	solute carrier family 9 member A1
Database Link:	Entrez Gene 6548 Human P19634
Background:	NHE-1 is involved in pH regulation to eliminate acids generated by active metabolism or to counter adverse environmental conditions. Major proton extruding system driven by the inward sodium ion chemical gradient. NHE-1 plays an important role in signal transduction. Located in the kidney and intestine.
Synonyms:	Sodium/hydrogen exchanger 1, APNH, APNH1
Protein Families:	Druggable Genome, Transmembrane
Protein Pathways:	Cardiac muscle contraction, Regulation of actin cytoskeleton



[View online »](#)

Product images:

Western blot using NHE1 antibody on HT-29 cell lysate. Lysate loaded at 30 ug/lane. Antibody used at 10 ug/ml. Secondary antibody: mouse anti-rabbit HRP.