

## Product datasheet for **AP05294PU-N**

### SLC9A1 Rabbit Polyclonal Antibody

#### Product data:

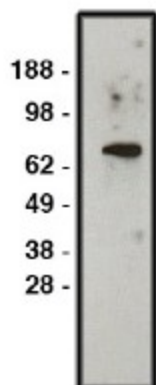
Product Type:	Primary Antibodies
Applications:	WB
Recommended Dilution:	<b>Western blot</b> (1/400 starting dilution). <i>Positive Control/Tissue Expression:</i> Protein expressed in Kidney and Intestine.
Reactivity:	Human
Host:	Rabbit
Clonality:	Polyclonal
Immunogen:	Synthetic peptide derived from the Human NHE-1 protein
Specificity:	This antibody detects Sodium-Hydrogen Exchanger 1 (NHE1).
Formulation:	Phosphate buffered saline with 0.08% Sodium Azide as preservative. State: Aff - Purified State: Liquid purified Ig fraction.
Concentration:	lot specific
Purification:	Immunoaffinity Chromatography.
Conjugation:	Unconjugated
Storage:	Store the antibody (in aliquots) at -20°C. Can be shipped at 2 - 8 °C. Avoid repeated freezing and thawing.
Stability:	Shelf life: One year from despatch.
Gene Name:	solute carrier family 9 member A1
Database Link:	<a href="#">Entrez Gene 6548 Human P19634</a>
Background:	NHE-1 is involved in pH regulation to eliminate acids generated by active metabolism or to counter adverse environmental conditions. Major proton extruding system driven by the inward sodium ion chemical gradient. NHE-1 plays an important role in signal transduction. Located in the kidney and intestine.
Synonyms:	Sodium/hydrogen exchanger 1, APNH, APNH1
Protein Families:	Druggable Genome, Transmembrane



[View online »](#)

Protein Pathways: Cardiac muscle contraction, Regulation of actin cytoskeleton

### Product images:



Western blot using NHE1 antibody on HT-29 cell lysate. Lysate used at 30 ug/ml. Antibody used at 1:400 dilution. Secondary antibody, mouse anti-rabbit HRP, used at 1:50k dilution.