

Product datasheet for **AP05293PU-N**

Smoothened (SMO) Rabbit Polyclonal Antibody

Product data:

Product Type:	Primary Antibodies
Applications:	WB
Recommended Dilution:	Western blot (1:400 starting dilution). Positive control: Brain.
Reactivity:	Human
Host:	Rabbit
Isotype:	IgG
Clonality:	Polyclonal
Immunogen:	Synthetic peptide derived from the human SMO protein
Specificity:	This antibody detects SMO (Smoothened Homolog).
Formulation:	Phosphate buffered saline with 0.08% sodium azide State: Aff - Purified State: Liquid Ig fraction
Concentration:	lot specific
Purification:	Affinity chromatography
Conjugation:	Unconjugated
Storage:	Store the product (in aliquots) at -20 °C. Can be shipped at 2 - 8 °C. Avoid repeated freezing and thawing.
Stability:	Shelf life: One year from despatch.
Gene Name:	smoothened, frizzled class receptor
Database Link:	Entrez Gene 6608 Human Q99835
Background:	SMO is a G protein-coupled receptor (GPCR) that putatively associates with the patched protein (PTCH) to transduce the hedgehog's proteins signal. The binding of sonic hedgehog (SHH) to its receptor patched is thought to prevent normal inhibition by patched of smoothened (SMO). In basal cell carcinoma there are two somatic mutations SMO, D473->H473 and R562 ->Q562.
Synonyms:	SMOH, Smoothened homolog

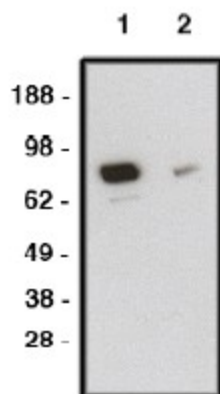


[View online »](#)

Protein Families: Druggable Genome, ES Cell Differentiation/IPS, Stem cell relevant signaling - DSL/Notch pathway, Transmembrane

Protein Pathways: Basal cell carcinoma, Hedgehog signaling pathway, Pathways in cancer

Product images:



Western blot using SMO antibody on human brain lysate. Lysate loaded at 15 ug/lane. Antibody used at 10 ug/ml (1) and 5 ug/ml (2) dilution. Secondary antibody, mouse anti-rabbit-HRP, used at 1:150K dilution.