

Product datasheet for **AP05288PU-N**

FBXW7 Rabbit Polyclonal Antibody

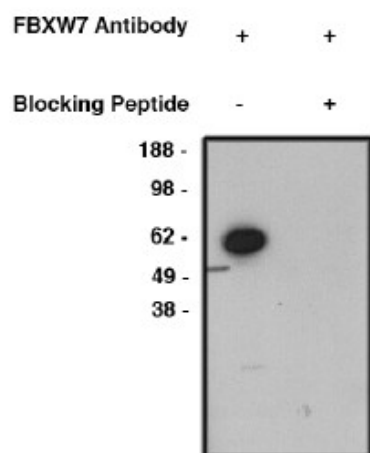
Product data:

Product Type:	Primary Antibodies
Applications:	WB
Recommended Dilution:	Western Blot: 1:400 starting dilution.
Reactivity:	Human
Host:	Rabbit
Clonality:	Polyclonal
Immunogen:	Synthetic peptide derived from the human FBXW7 protein
Specificity:	This antibody detects FBXW7, widely expressed.
Formulation:	Phosphate buffered saline with 0.08% sodium azide State: Aff - Purified State: Liquid Ig fraction
Concentration:	lot specific
Purification:	Affinity chromatography
Conjugation:	Unconjugated
Storage:	Upon receipt, store undiluted (in aliquots) at -20°C. Avoid repeated freezing and thawing.
Stability:	Shelf life: one year from despatch.
Gene Name:	F-box and WD repeat domain containing 7
Database Link:	Entrez Gene 55294 Human Q969H0
Background:	Substrate recognition component of a SCF (SKP1-CUL1-F-box protein) E3 ubiquitin-protein ligase complex which mediates the ubiquitination and subsequent proteasomal degradation of target proteins. Probably recognizes and binds to phosphorylated target proteins. Involved in the degradation of cyclin E, NOTCH1 released notch intracellular domain (NICD), and probably PSEN1.
Synonyms:	FBW7, FBX30, SEL10, Archipelago homolog, hAgo, SEL-10, hCDC4



[View online »](#)

Product images:



Western blot analysis using FBXW7 antibody on human brain lysate. Antibody used at 1 ug/ml dilution and is used alone (1) or incubated with blocking peptide (2). Visualized using mouse anti-rabbit HRP at 1:200K dilution.