

Product datasheet for **AP05287SU-N**

ROBO1 Rabbit Polyclonal Antibody

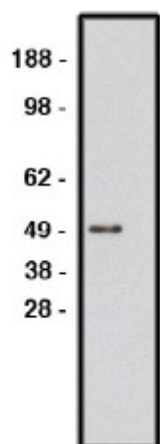
Product data:

Product Type:	Primary Antibodies
Applications:	WB
Recommend Dilution:	Western Blot (1-5 µg/ml).
Reactivity:	Human
Host:	Rabbit
Clonality:	Polyclonal
Immunogen:	Synthetic peptide derived from human ROBO1 protein
Specificity:	This antibody detects Roundabout homolog 1 / ROBO1, widely expressed, with exception of kidney.
Formulation:	Phosphate buffered saline with 0.08% sodium azide State: Purified State: Liquid purified Ig fraction
Concentration:	lot specific
Storage:	Store the product (in aliquots) at -20 °C. Can be shipped at 2 - 8 °C. Avoid repeated freezing and thawing.
Stability:	Shelf life: One year from despatch.
Database Link:	Entrez Gene 6091 Human
Background:	Receptor for SLIT1 and SLIT2 which are thought to act as molecular guidance cue in cellular migration, including axonal navigation at the ventral midline of the neural tube and projection of axons to different regions during neuronal development. In axon growth cones, the silencing of the attractive effect of NTN1 by SLIT2 may require the formation of a ROBO1-DCC complex. May be required for lung development. Defects in ROBO1 may be a cause of breast and lung cancer. ROBO1 maps within a region of overlapping homozygous deletions characterized in both small cell lung cancer cell lines (SCLC) and in a breast cancer cell line.
Synonyms:	ROBO-1, Roundabout homolog 1, DUTT1



[View online »](#)

Product images:



Western blot using ROBO1 antibody on human brain lysate. Lysate used at 15 ug/lane. Antibody used at 10 ug/ml. Secondary antibody, mouse anti rabbit HRP, used at 1:50k.