

## Product datasheet for **AP05287PU-N**

### **ROBO1 Rabbit Polyclonal Antibody**

#### **Product data:**

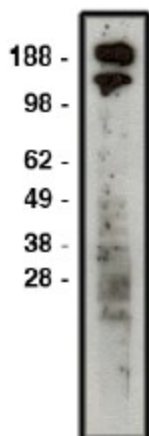
<b>Product Type:</b>	Primary Antibodies
<b>Applications:</b>	WB
<b>Recommended Dilution:</b>	Western blot (1:400 starting dilution).
<b>Reactivity:</b>	Human
<b>Host:</b>	Rabbit
<b>Clonality:</b>	Polyclonal
<b>Immunogen:</b>	Synthetic peptide derived from human ROBO1 protein
<b>Specificity:</b>	This antibody detects Roundabout homolog 1 / ROBO1, widely expressed, with exception of kidney.
<b>Formulation:</b>	Phosphate buffered saline with 0.08% sodium azide State: Aff - Purified State: Liquid Ig fraction
<b>Concentration:</b>	lot specific
<b>Purification:</b>	Affinity chromatography
<b>Conjugation:</b>	Unconjugated
<b>Storage:</b>	Store the product (in aliquots) at -20 °C. Can be shipped at 2 - 8 °C. Avoid repeated freezing and thawing.
<b>Stability:</b>	Shelf life: One year from despatch.
<b>Gene Name:</b>	roundabout guidance receptor 1
<b>Database Link:</b>	<a href="#">Entrez Gene 6091 Human Q9Y6N7</a>
<b>Background:</b>	Receptor for SLIT1 and SLIT2 which are thought to act as molecular guidance cue in cellular migration, including axonal navigation at the ventral midline of the neural tube and projection of axons to different regions during neuronal development. In axon growth cones, the silencing of the attractive effect of NTN1 by SLIT2 may require the formation of a ROBO1-DCC complex. May be required for lung development. Defects in ROBO1 may be a cause of breast and lung cancer. ROBO1 maps within a region of overlapping homozygous deletions characterized in both small cell lung cancer cell lines (SCLC) and in a breast cancer cell line.



[View online »](#)

Synonyms: ROBO-1, Roundabout homolog 1, DUTT1

**Product images:**



Western blot using ROBO1 antibody on HT-29 cell lysate. Lysate used at 30 ug/lane. Antibody used at 1:400 dilution. Secondary antibody, mouse anti-rabbit HRP, used at 1:50k dilution.